



INOCA :

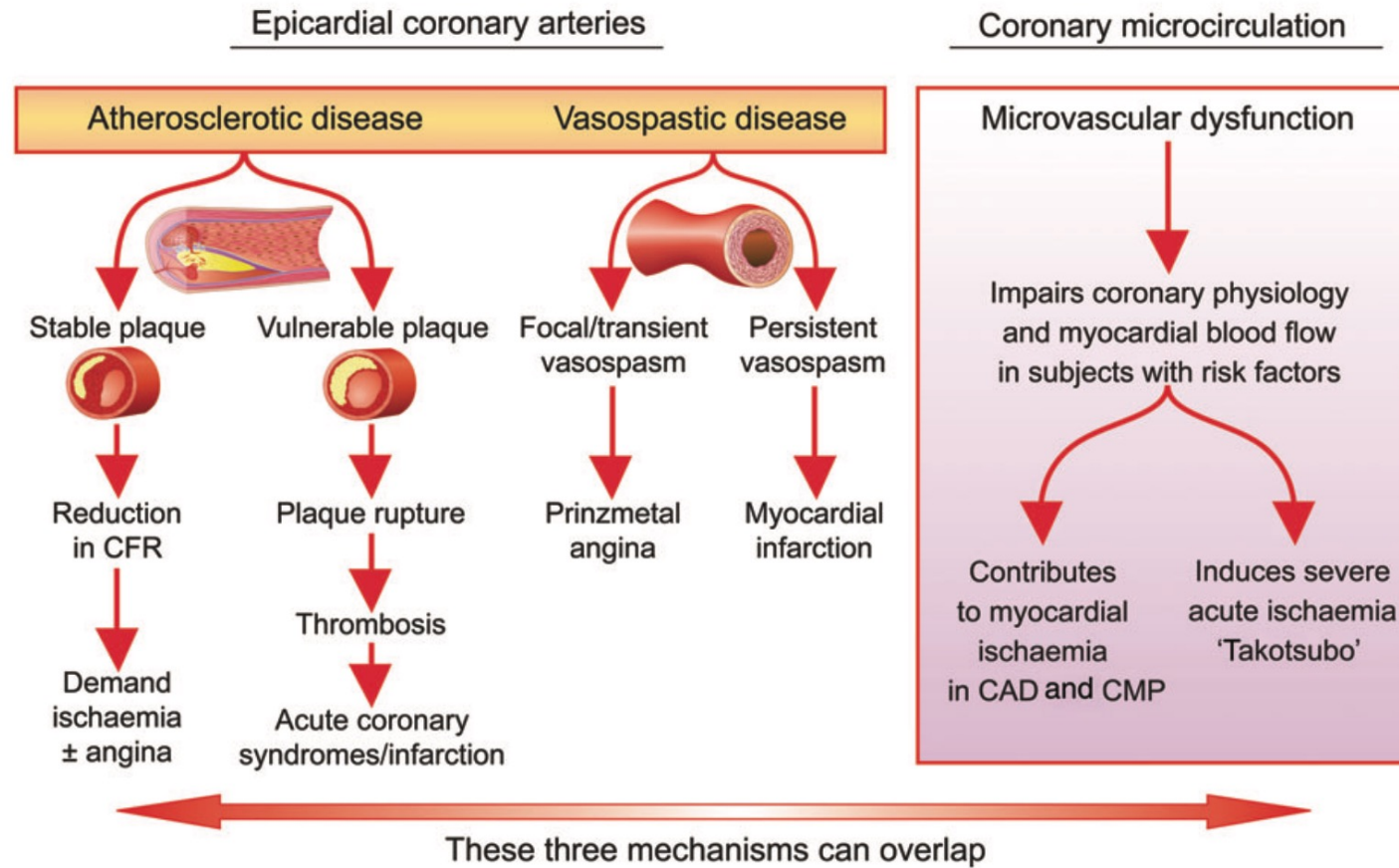
**Ischemia with No Obstructive Coronary Artery Disease
Une pathologie de la micro-circulation**

Julien Adjedj

Ischémie myocardique

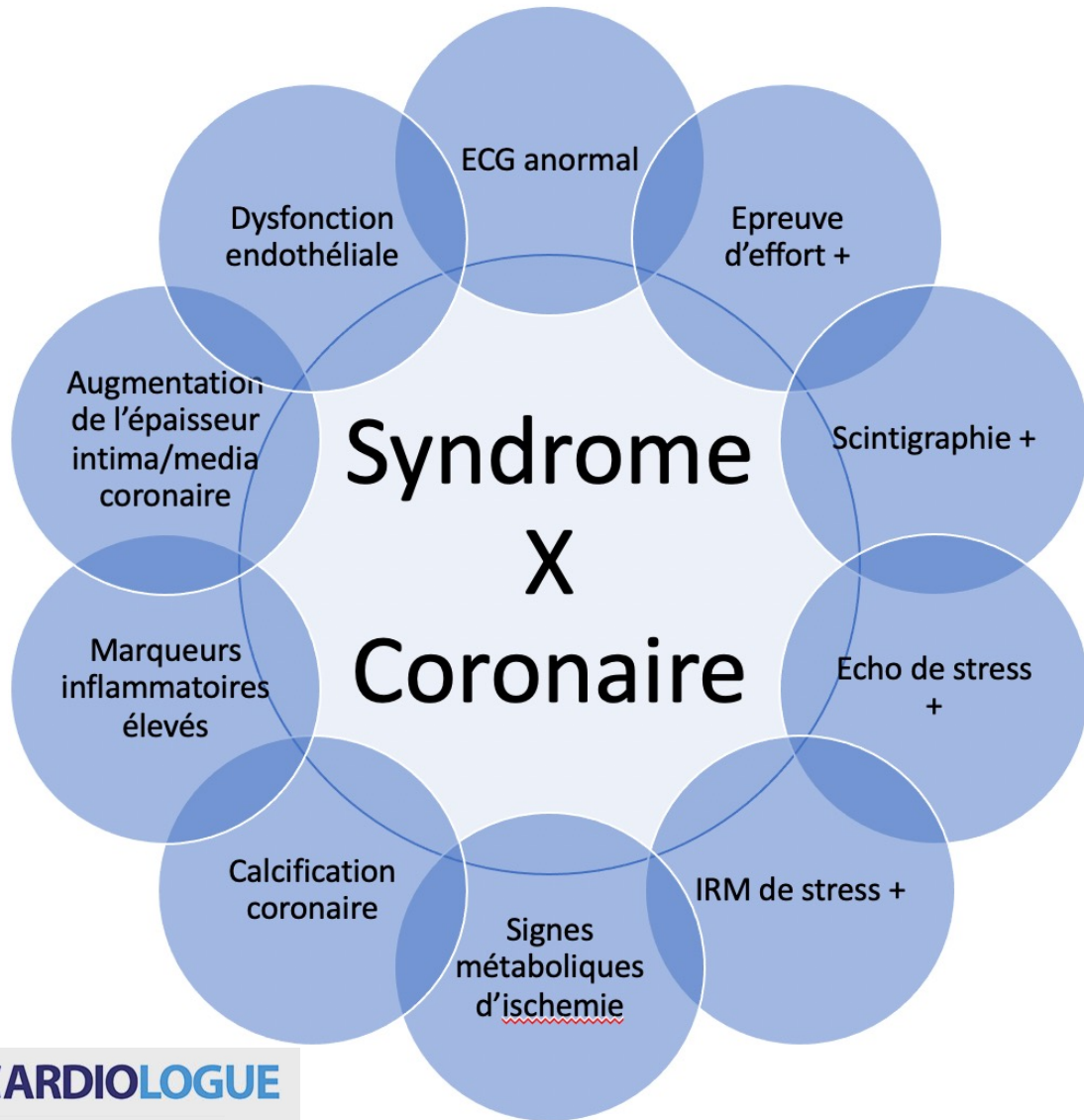


Mechanisms of myocardial ischaemia

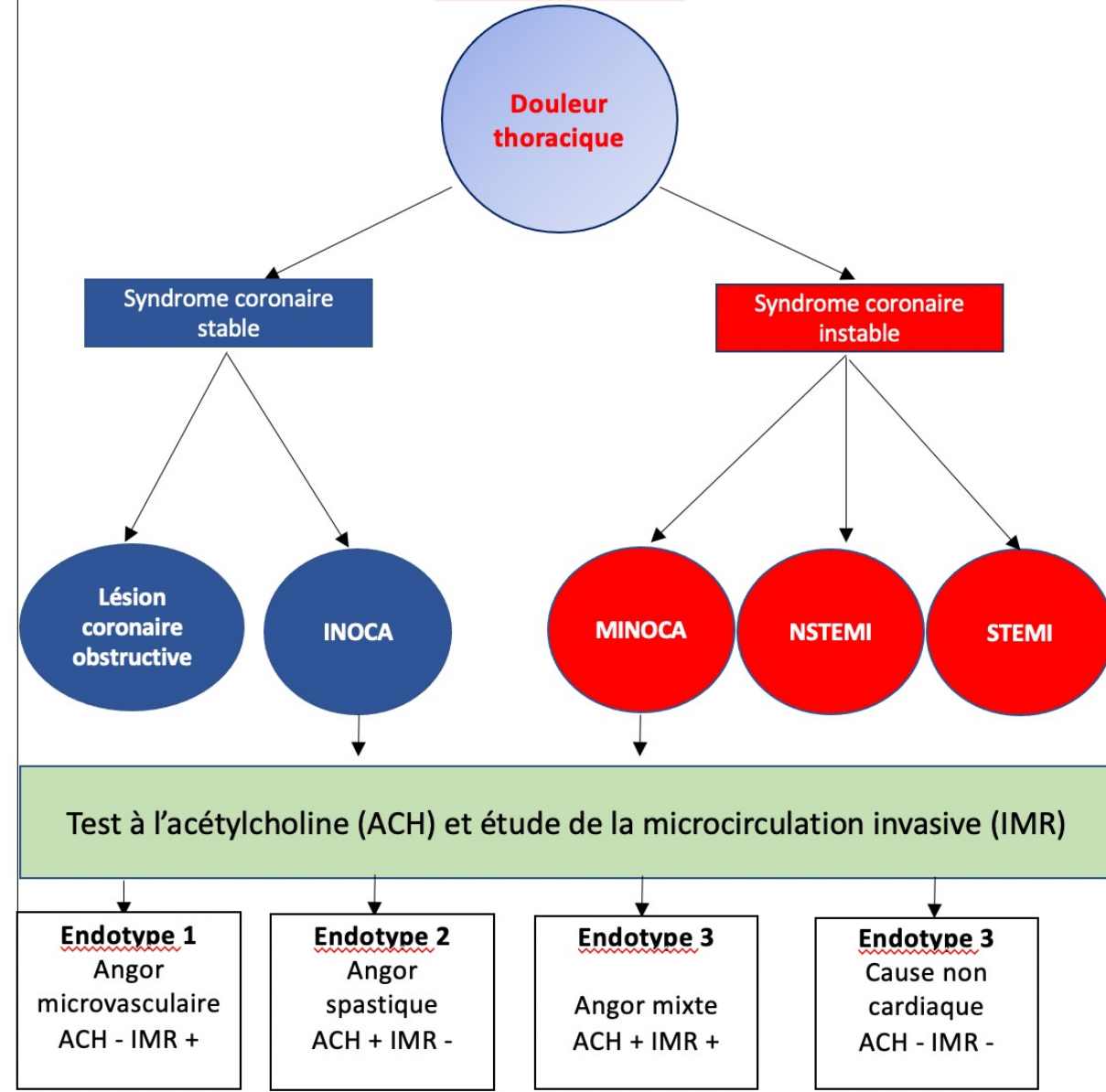


Classification nosologique des douleurs thoraciques sans atteintes coronaire épigardiques

Syndrome X coronaire

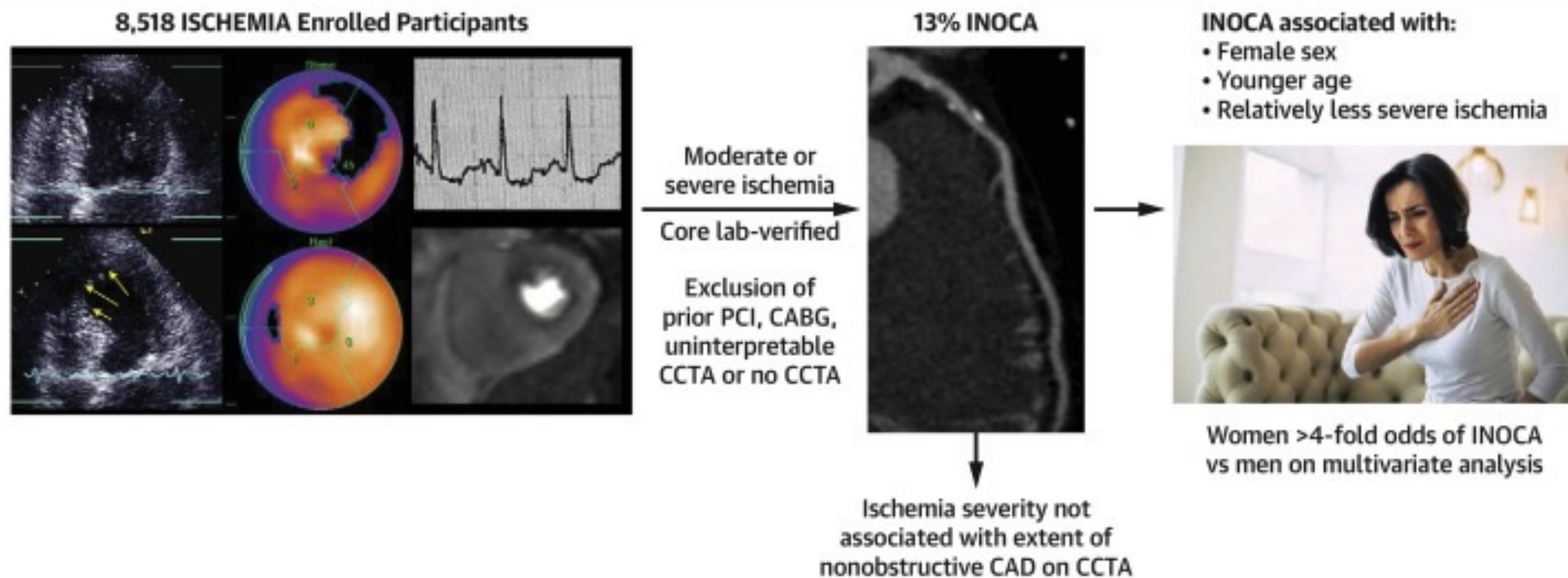


INOCA



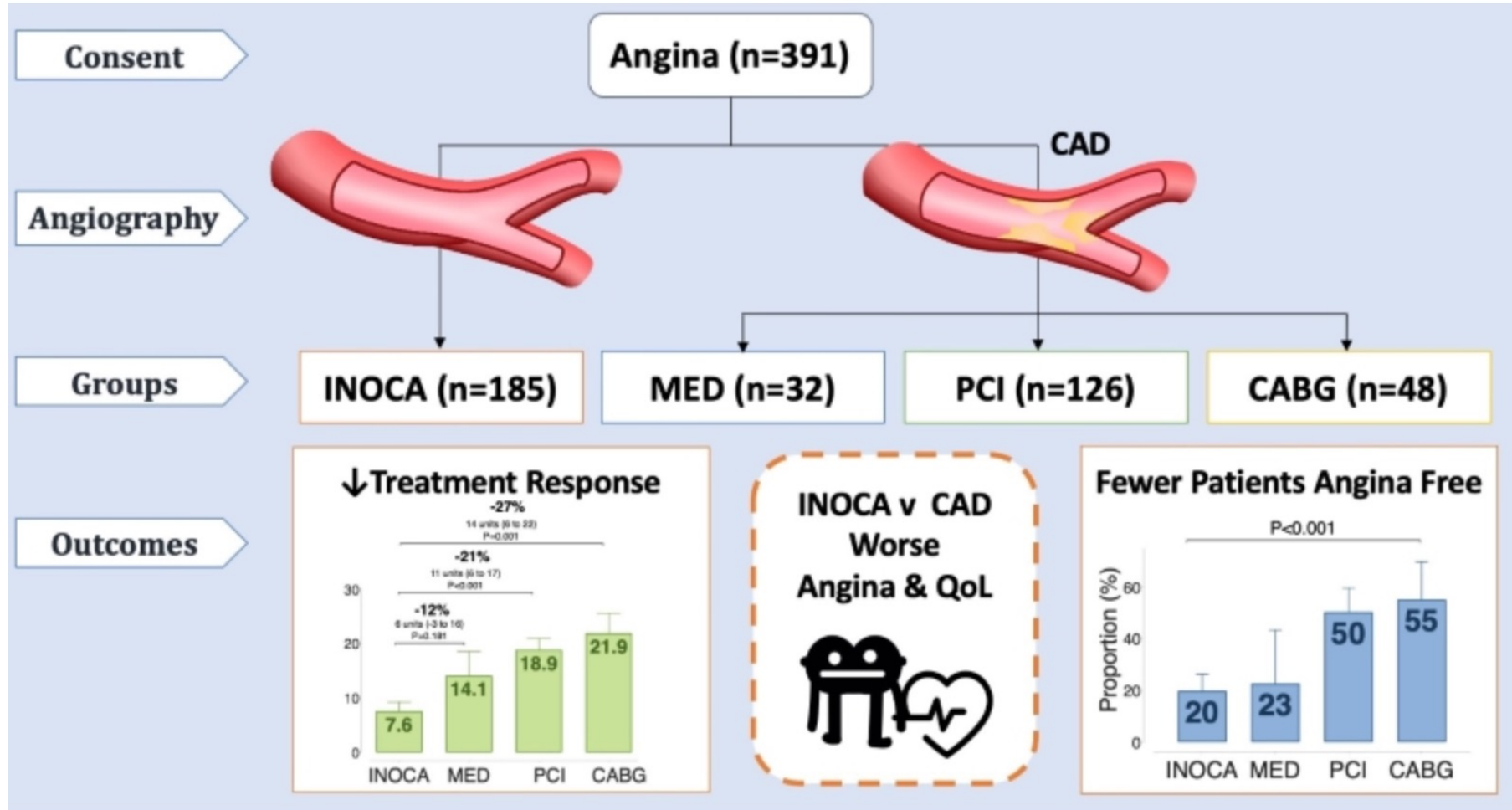
INOCA: défi de demain

CENTRAL ILLUSTRATION: INOCA in the ISCHEMIA Study



Reynolds HR, et al. J Am Coll Cardiol Img. 2023;16(1):63-74.

INOCA: défi de demain



Consensus: évaluation invasive

Ischaemia with non obstructive coronary arteries (INOCA)

Coronary Microvascular dysfunction (CMD)/Vasospastic angina (VSA)

Non-invasive evaluation

Step 1: Patient evaluation

Step 2: Non-invasive evaluation
Functional Imaging
± Coronary CT Angiography

Invasive evaluation

Step 1: Invasive Coronary angiography

Step 2: FCA guidewire and Adenosine test

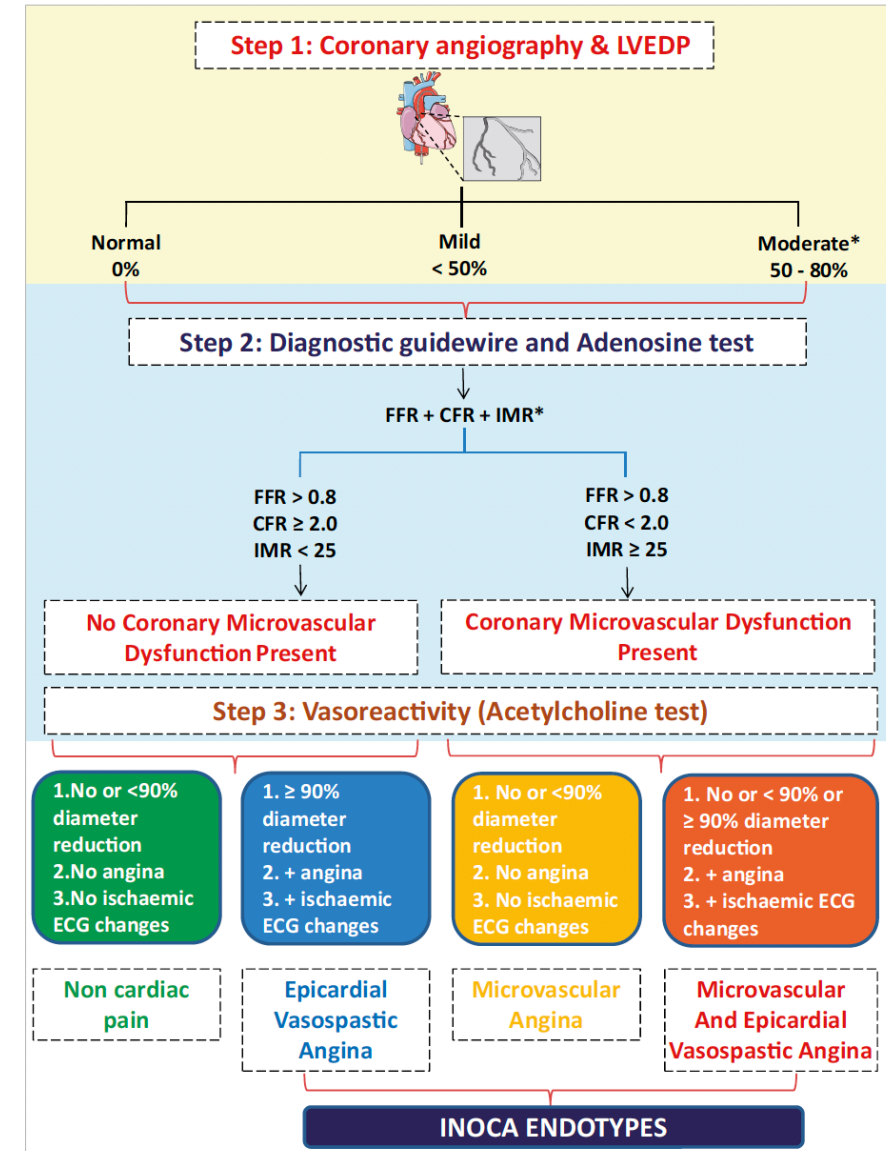
Step 3: FCA Vasoreactivity (ACH test)

Epicardial Vasospastic Angina

Microvascular Angina

Microvascular And Epicardial Vasospastic Angina

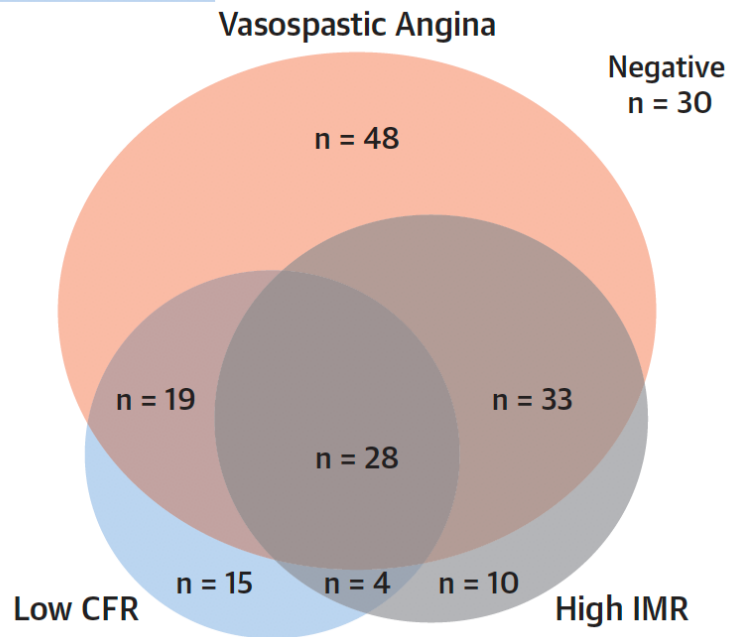
INOCA ENDOTYPES



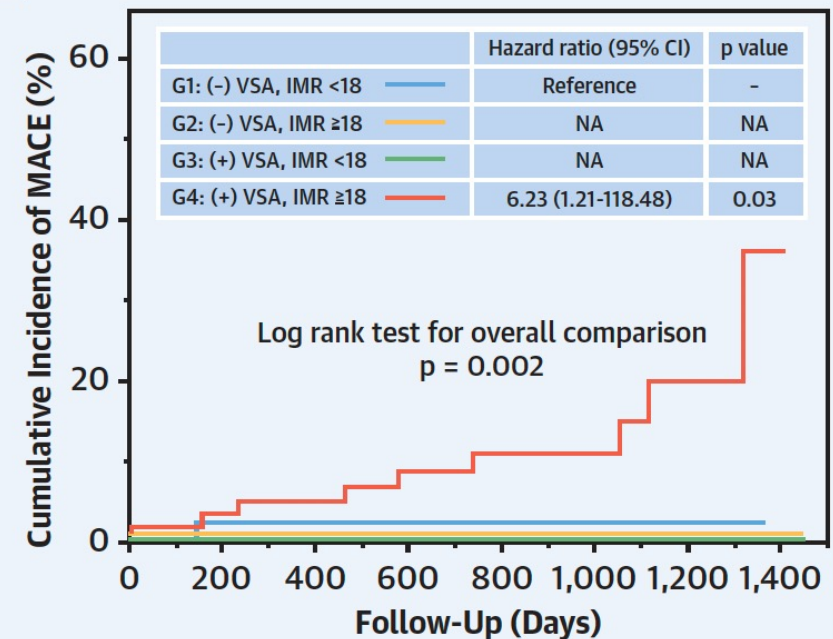
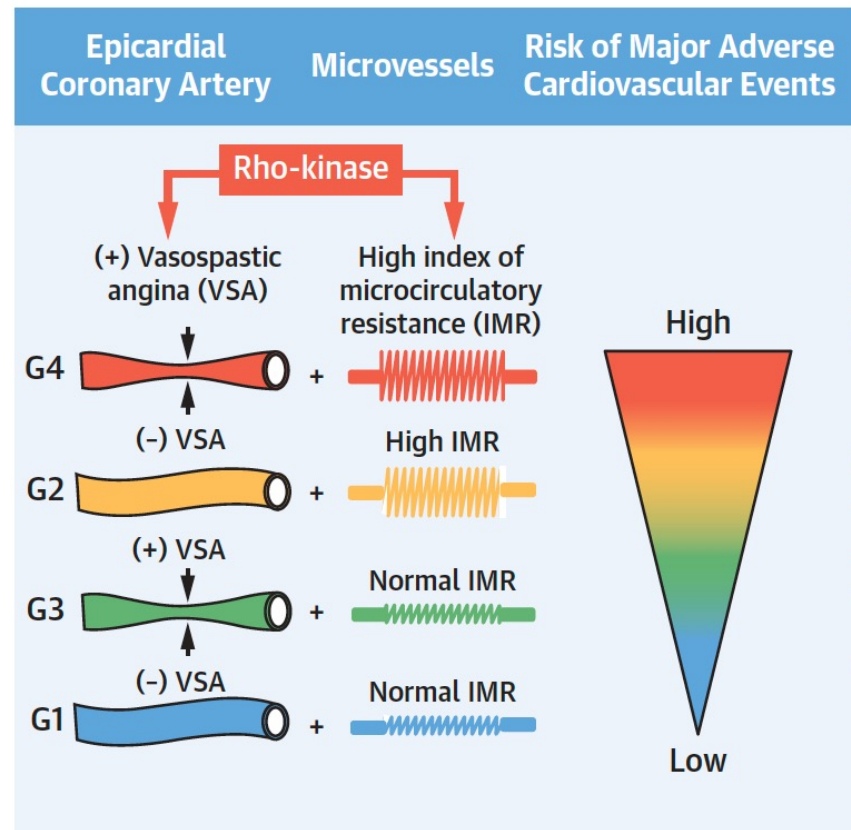
Pronostic

FIGURE 4 Coexistence of Coronary Functional Abnormalities

Overall n = 187



CENTRAL ILLUSTRATION Vasospastic Angina and High Index of Microcirculatory Resistance: Prognostic Impact of Coexistence



Thérapeutique

**Randomized
151 Patients**



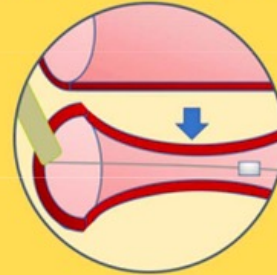
**Angina & No
Obstructive CAD**

Intervention
Invasive Coronary
Function Guided
Care (n=75)



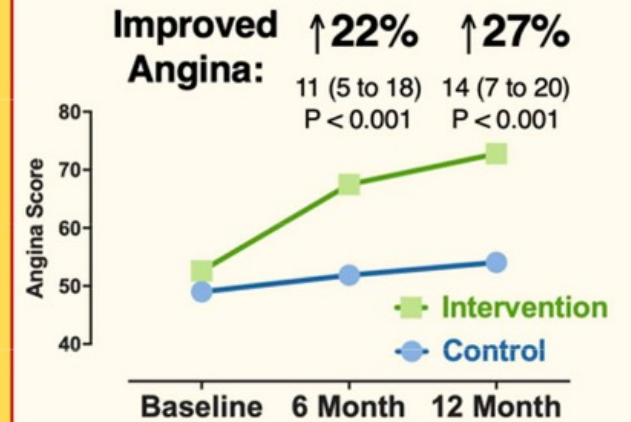
Control
Angiography guided
Care (n=76)

Linked Diagnosis:
Microvascular angina
Vasospastic angina
Non-cardiac



Therapy:
Stratify Antianginals
Non-pharmacological

Main Results:



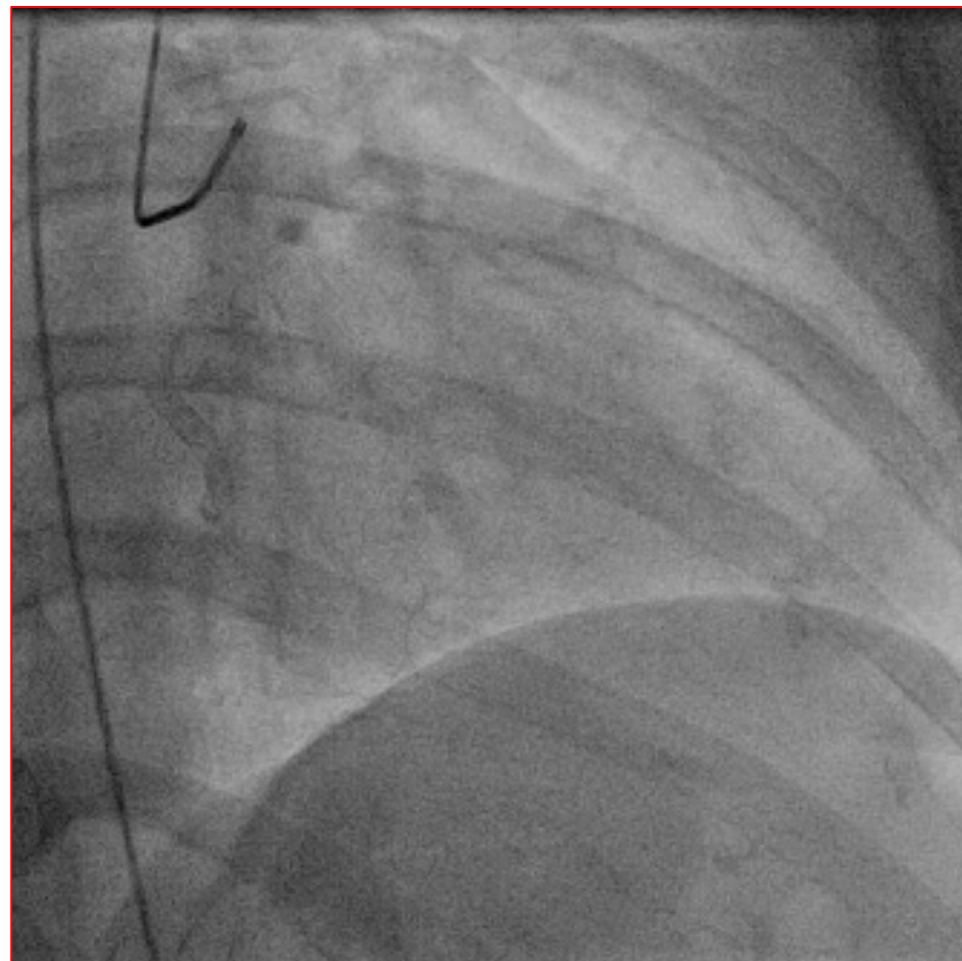
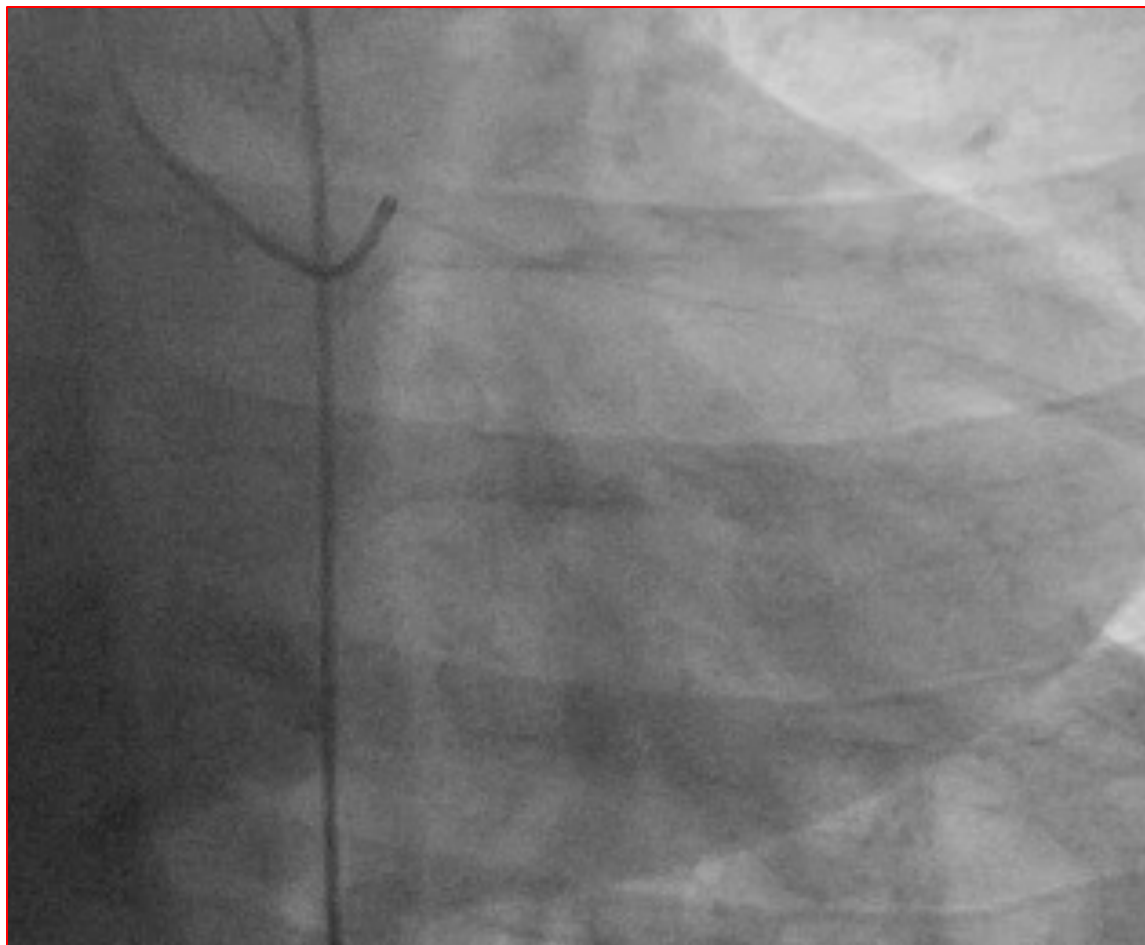
**Sustained Benefits:
Improved Angina and
Quality of Life**

Cas clinique: Patiente de 42 ans

- Angor stable depuis 3 ans
- Hérité et tabac sevré
- Coro angioplastie de la CD x 2
- Coro x 5
- ECG repos normal test non invasif -



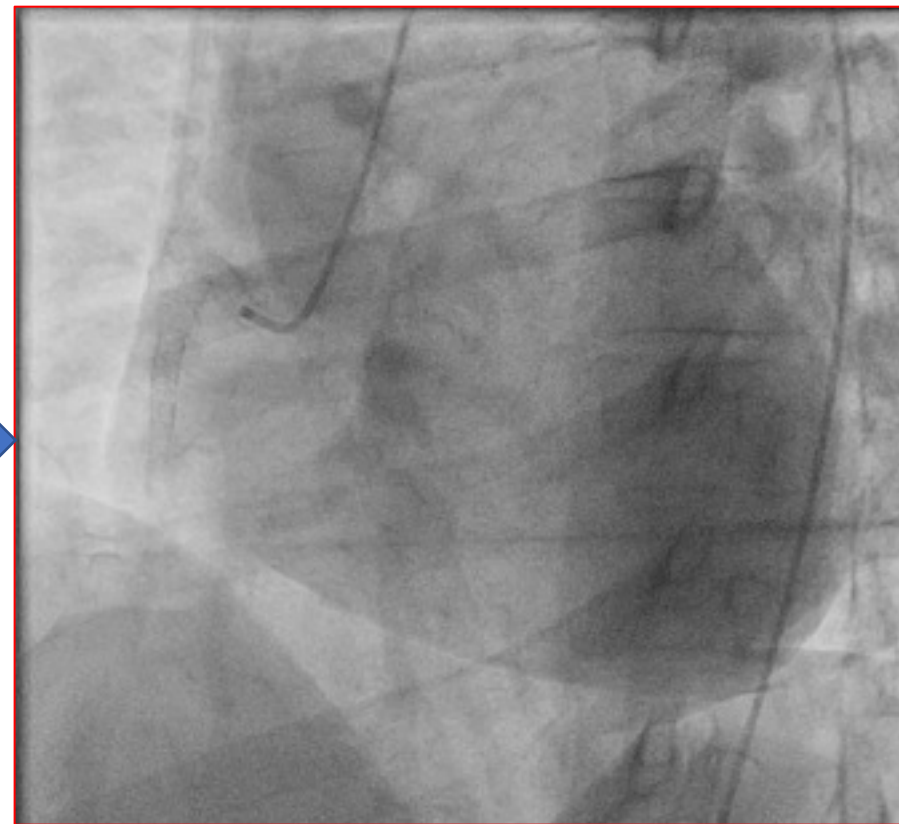
Cas clinique: Patiente de 42 ans



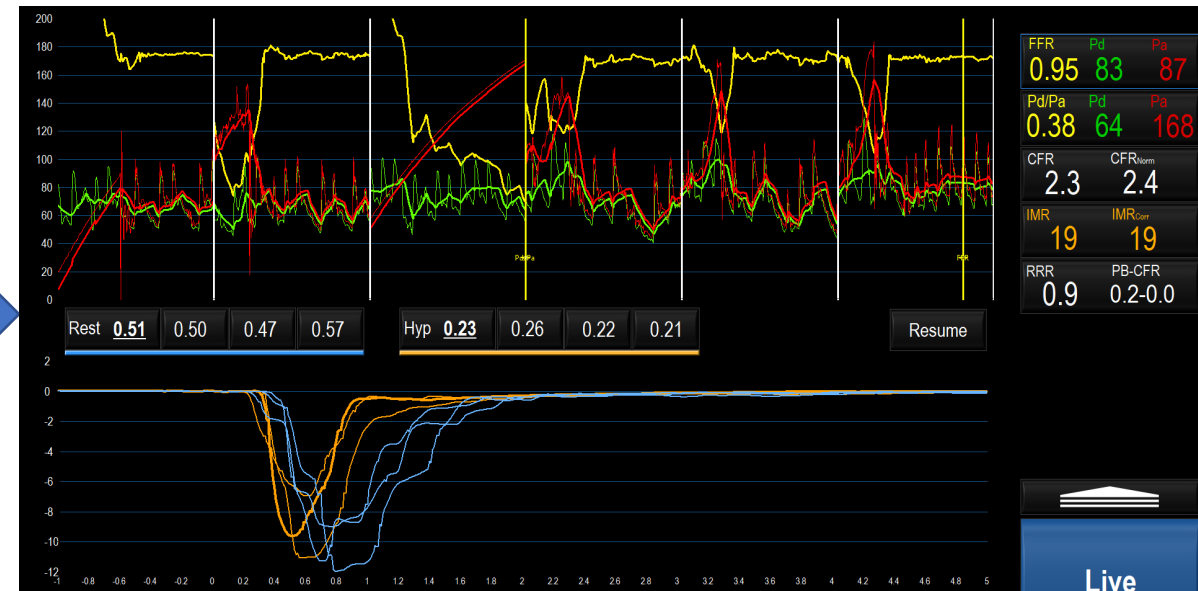
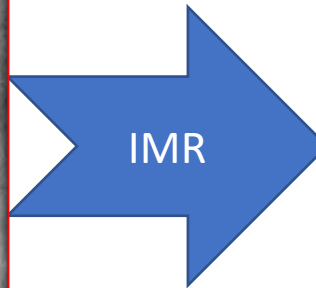
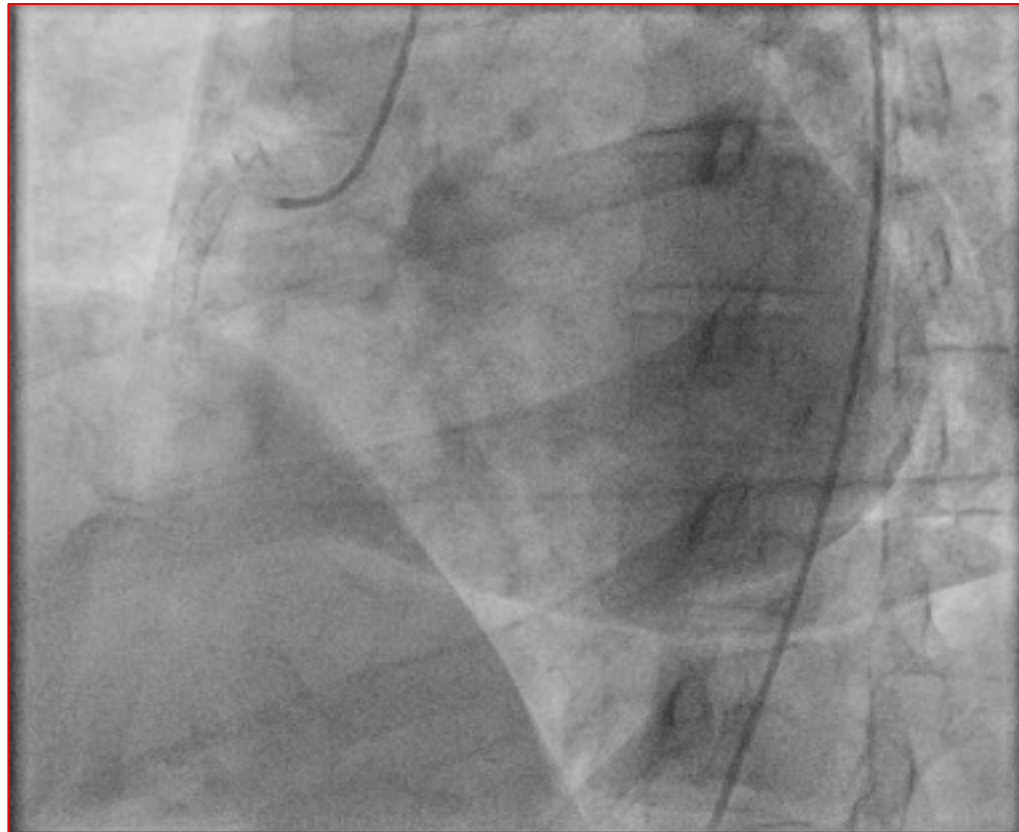
Cas clinique: Patiente de 42 ans



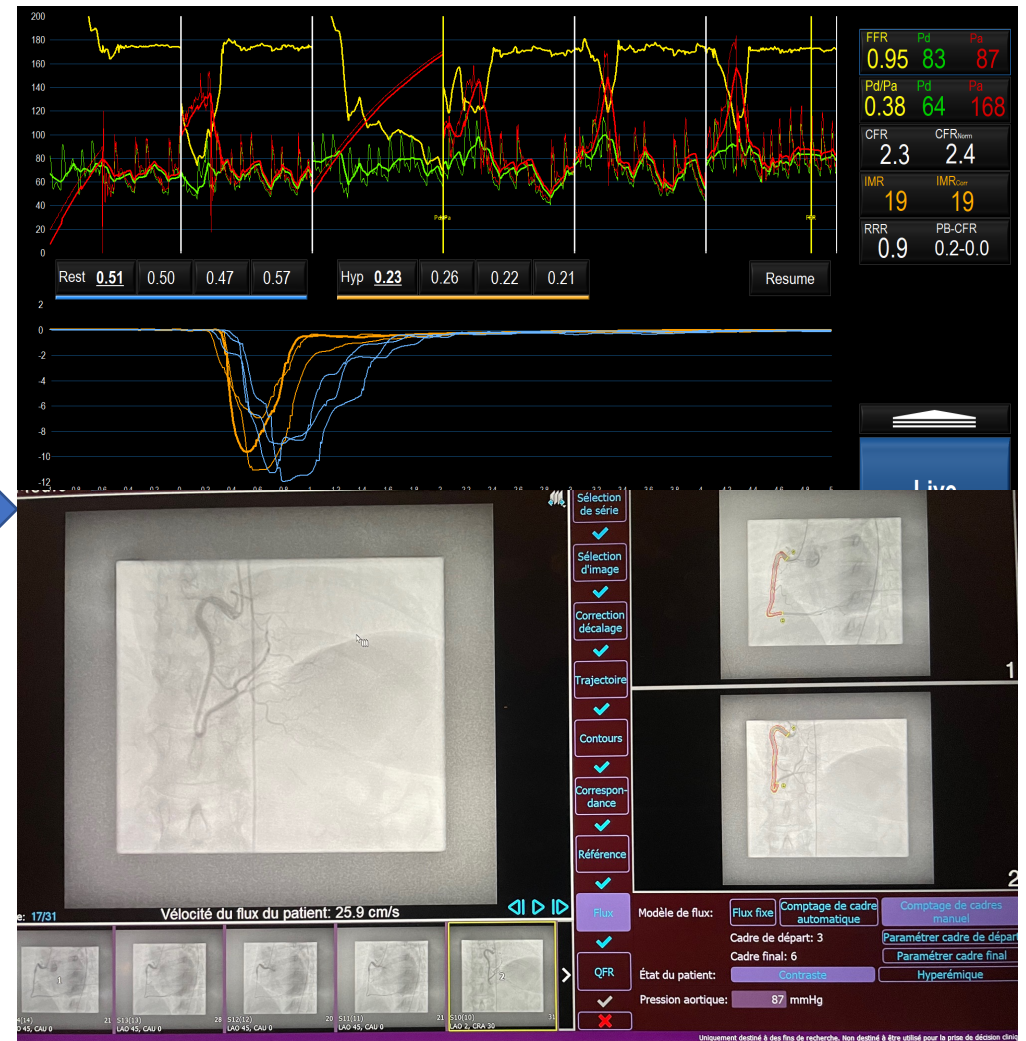
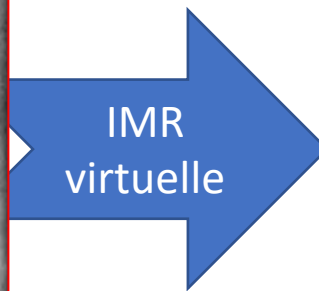
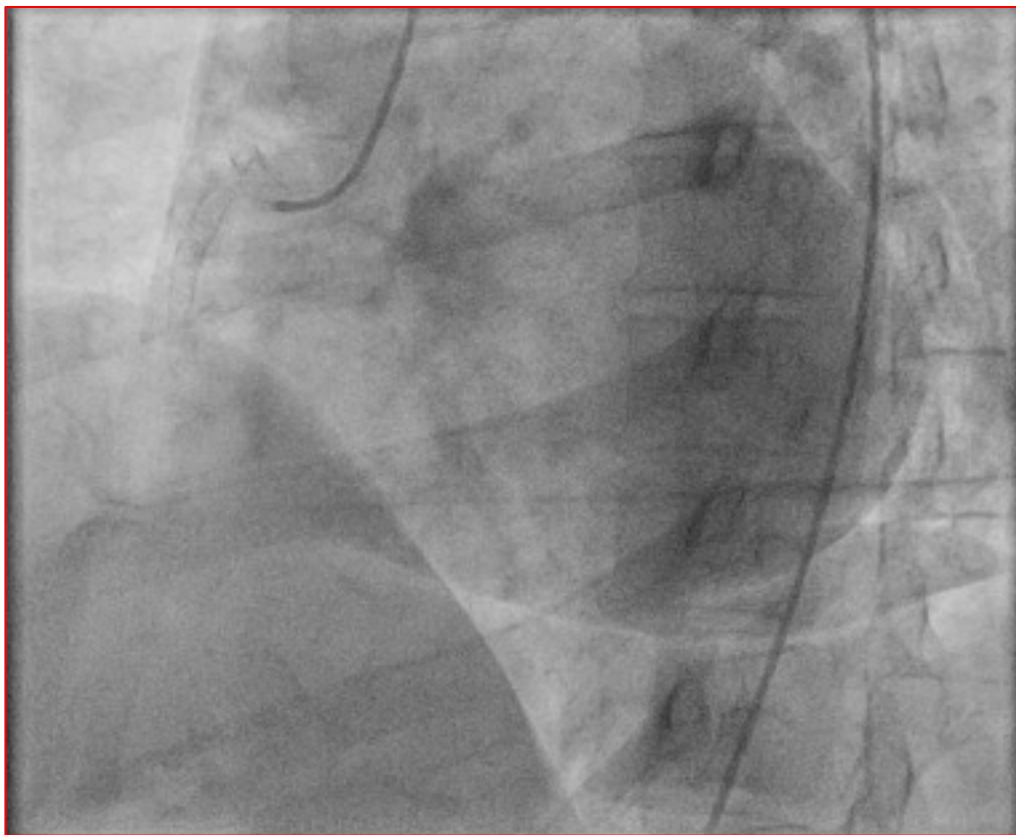
Acetylcholine 50 mcg



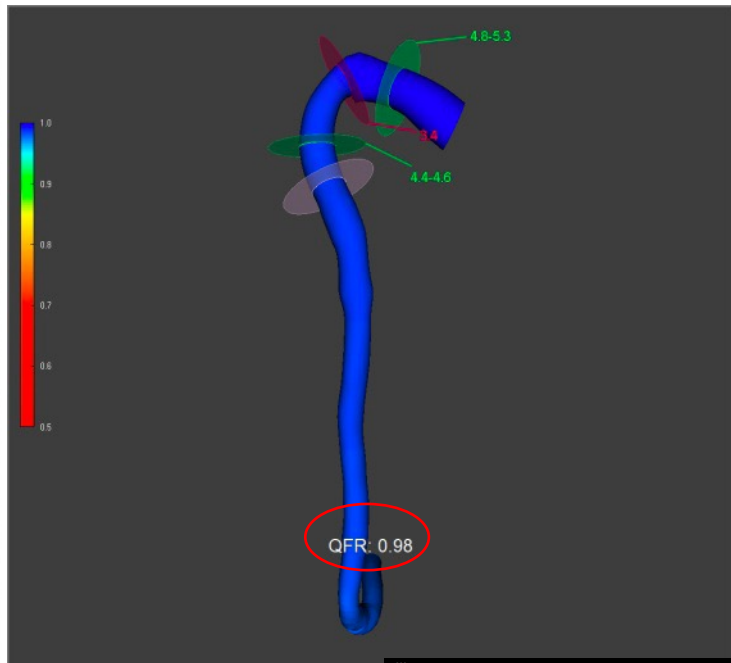
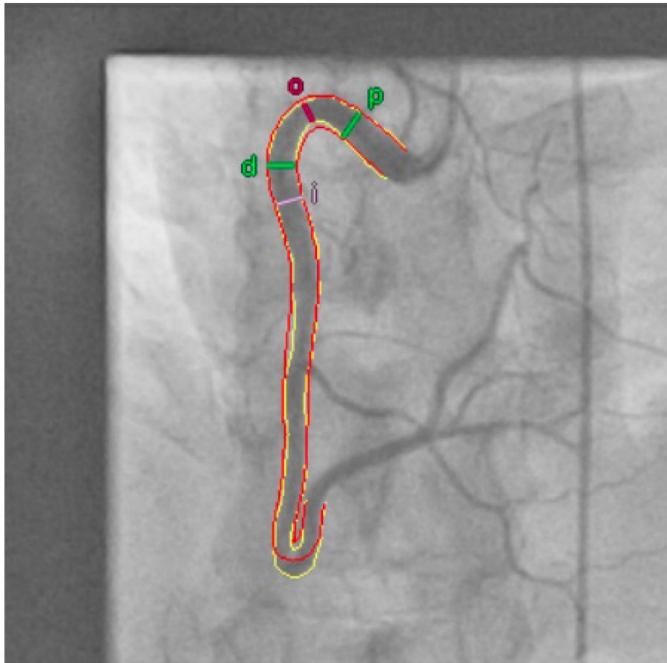
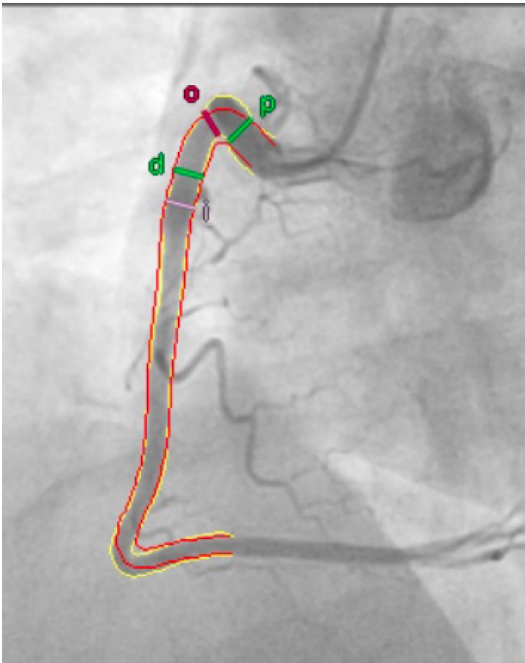
Cas clinique: Patiente de 42 ans



Cas clinique: Patiente de 42 ans

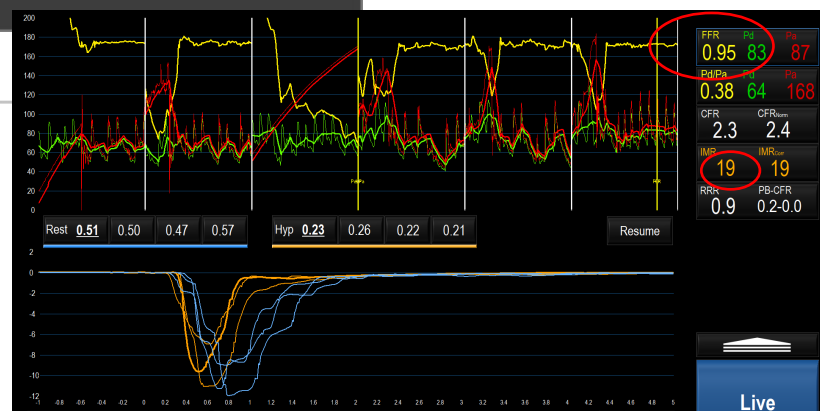


IMR virtuelle



Résultats QFR vaisseau

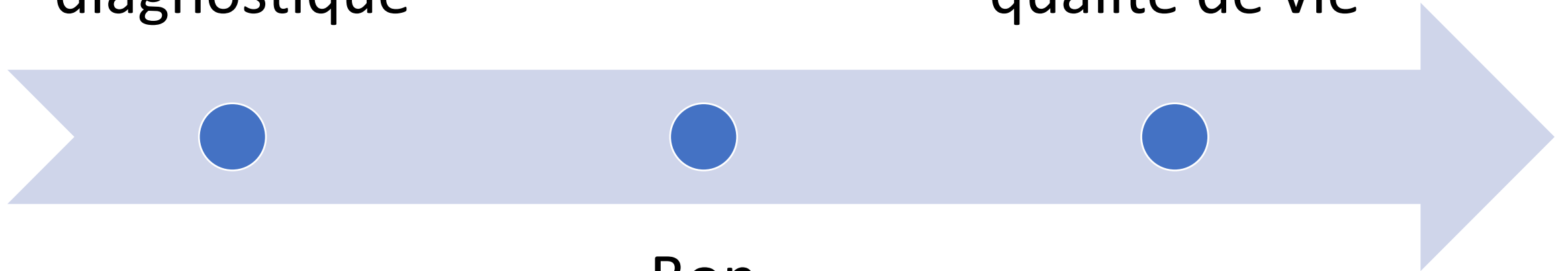
	Contraste	Flux fixe	
QFR vaisseau	0.98	0.98	
QFR sur indice	0.99	0.99	29.5 mm
Résistance	3.59		mmHg*s/m
Vitesse du flux	25.9	18.6	cm/s
Angio IMR (cf)	30.76		mmHg*s
Angio IMR (hf)	18.49		mmHg*s



Le message clé

Bon
diagnostique

Meilleure
qualité de vie



Bon
traitement