



Consultation  
systématique

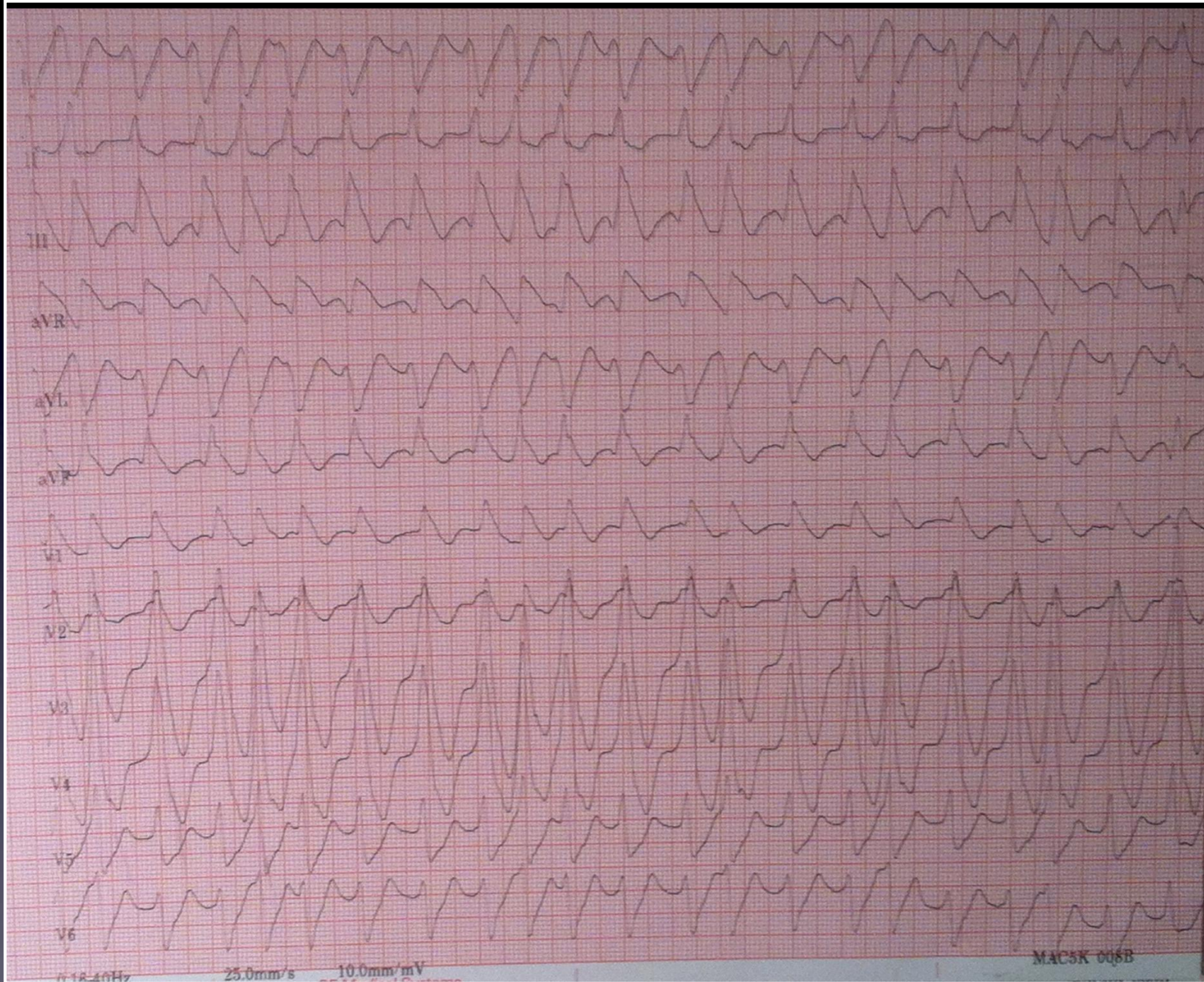
Patient insuffisant  
cardiaque de 79 ans

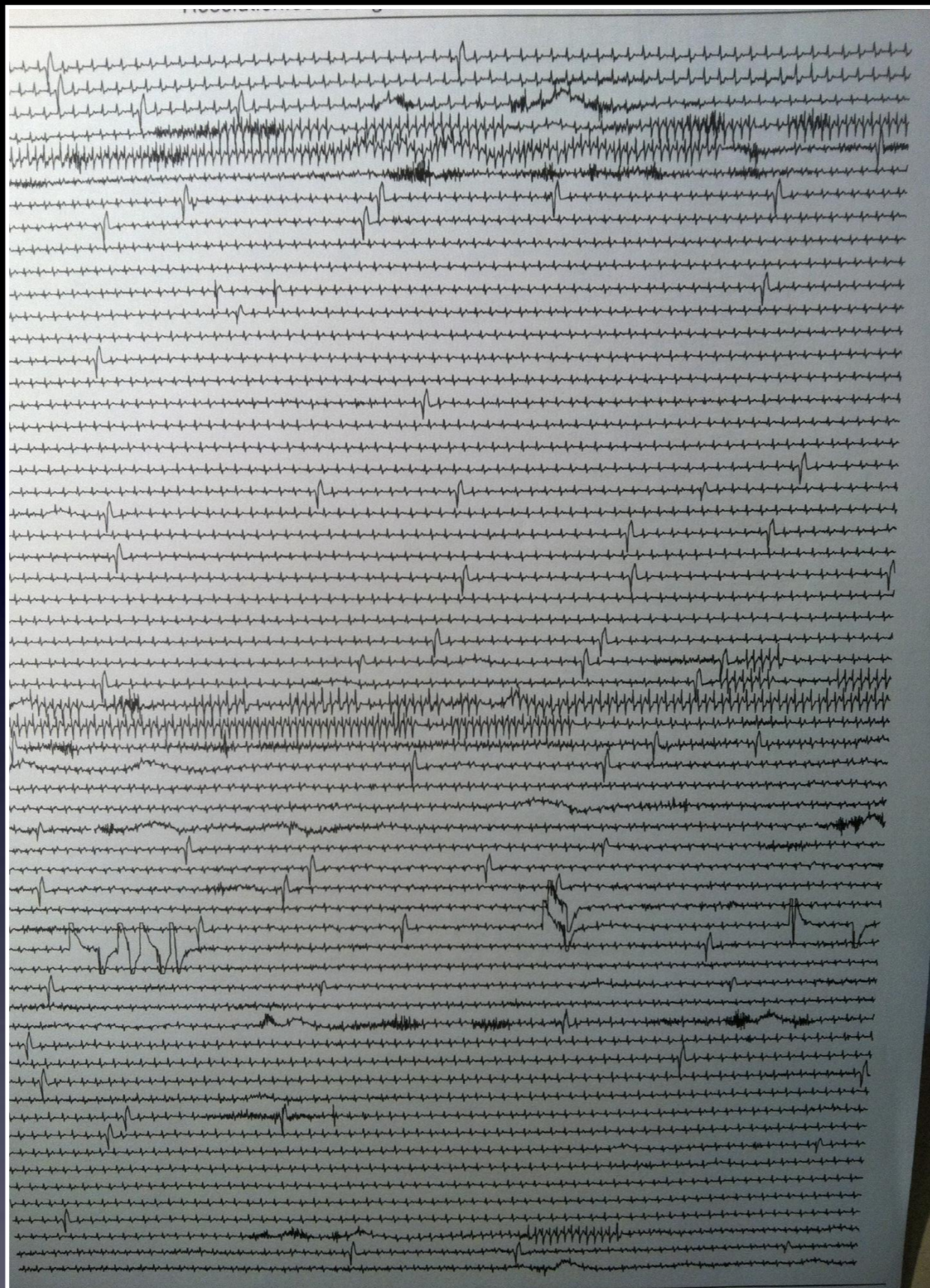
# ATCD

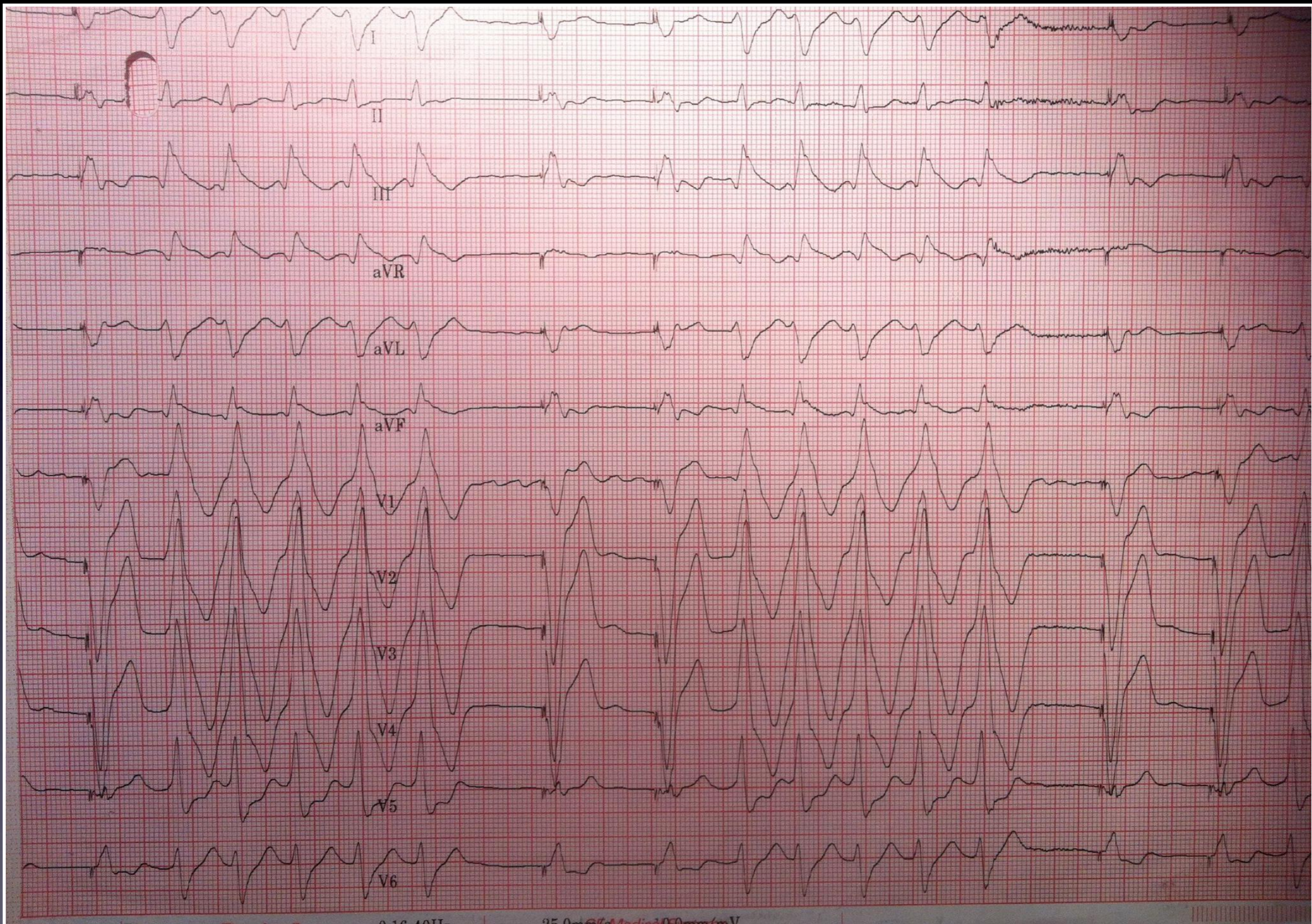
- IDM antérieur, ACT IVA il y a 10 ans
- En FA depuis 5 ans
- Insuffisance cardiaque , FEVG=30%
- Kc de prostate il y a 6 ans

# HDLM

- Mort subite récupérée il y a 1 ans
- DAI biV VVIR 60, sous BB+amiodarone
- Contrôle systématique ce jour:
- .....en fait lipothymie à l'effort depuis 2 mois



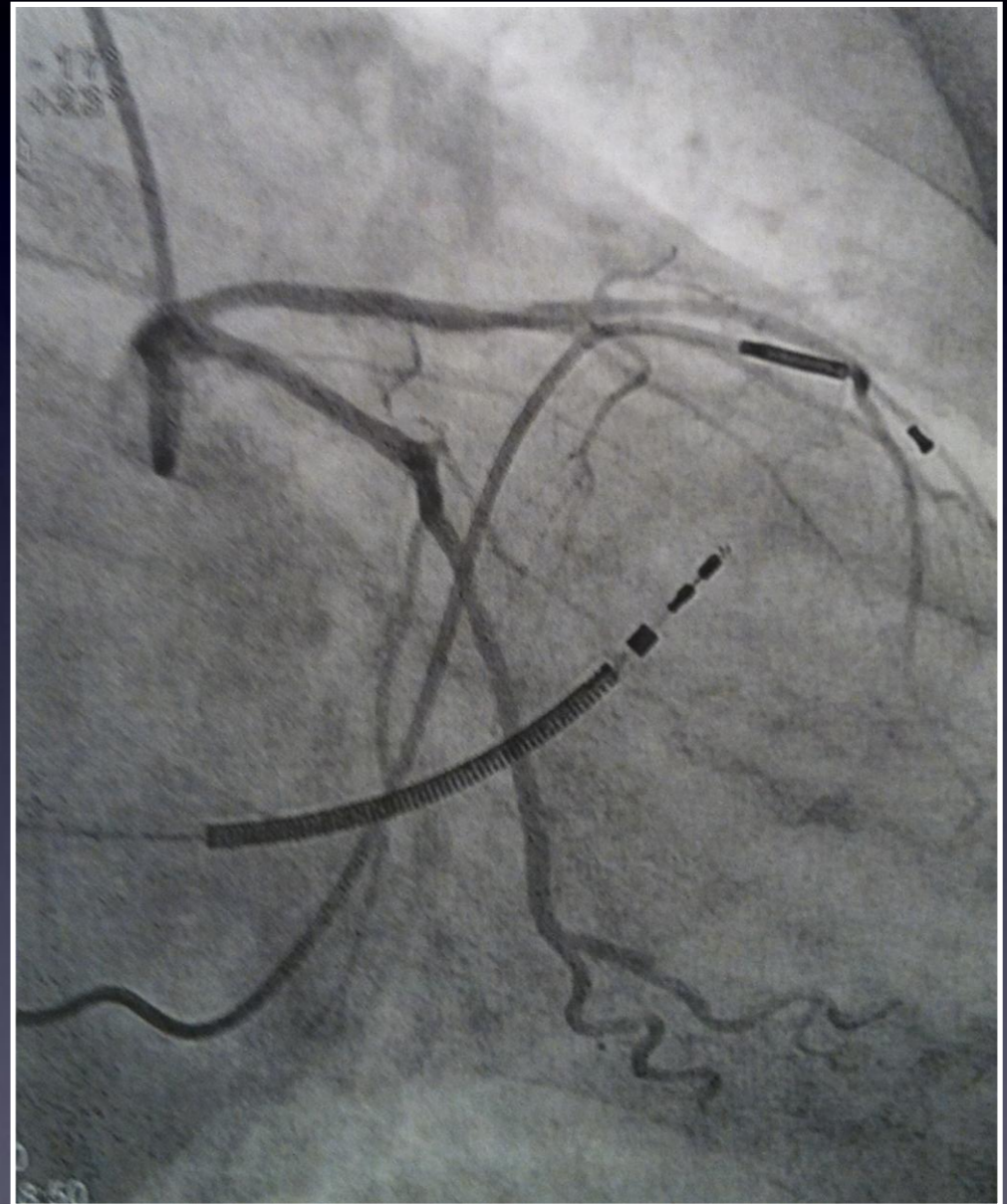




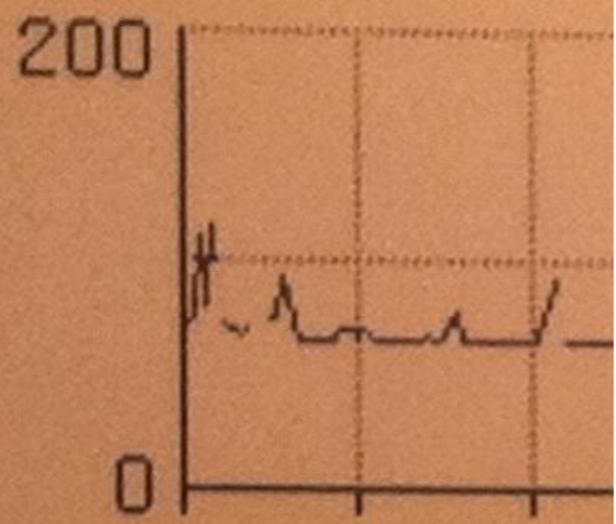
0.10 40II 95.0 67.4 100mm/mV

# Bilan étiologique

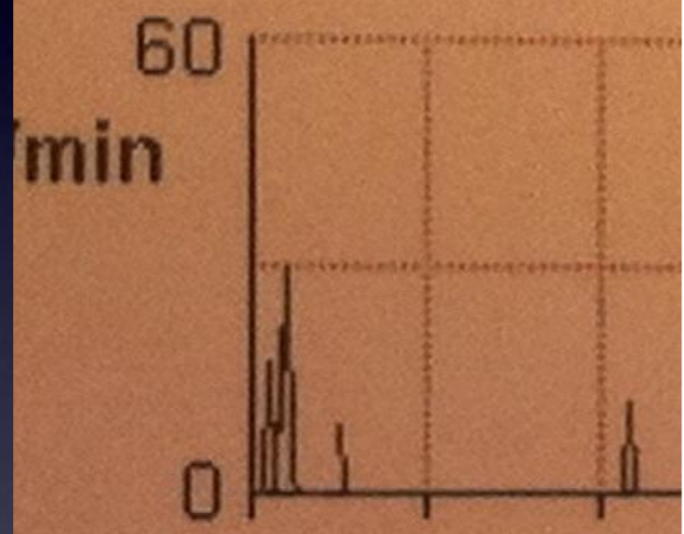
- TSH, ionogramme
- Coro: sténose intermédiaire de l'IVA FFR=0,82



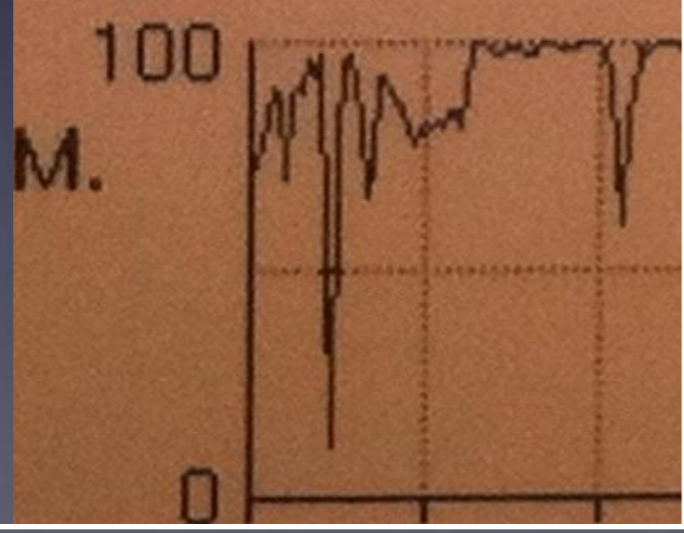
Fce



ES  
V

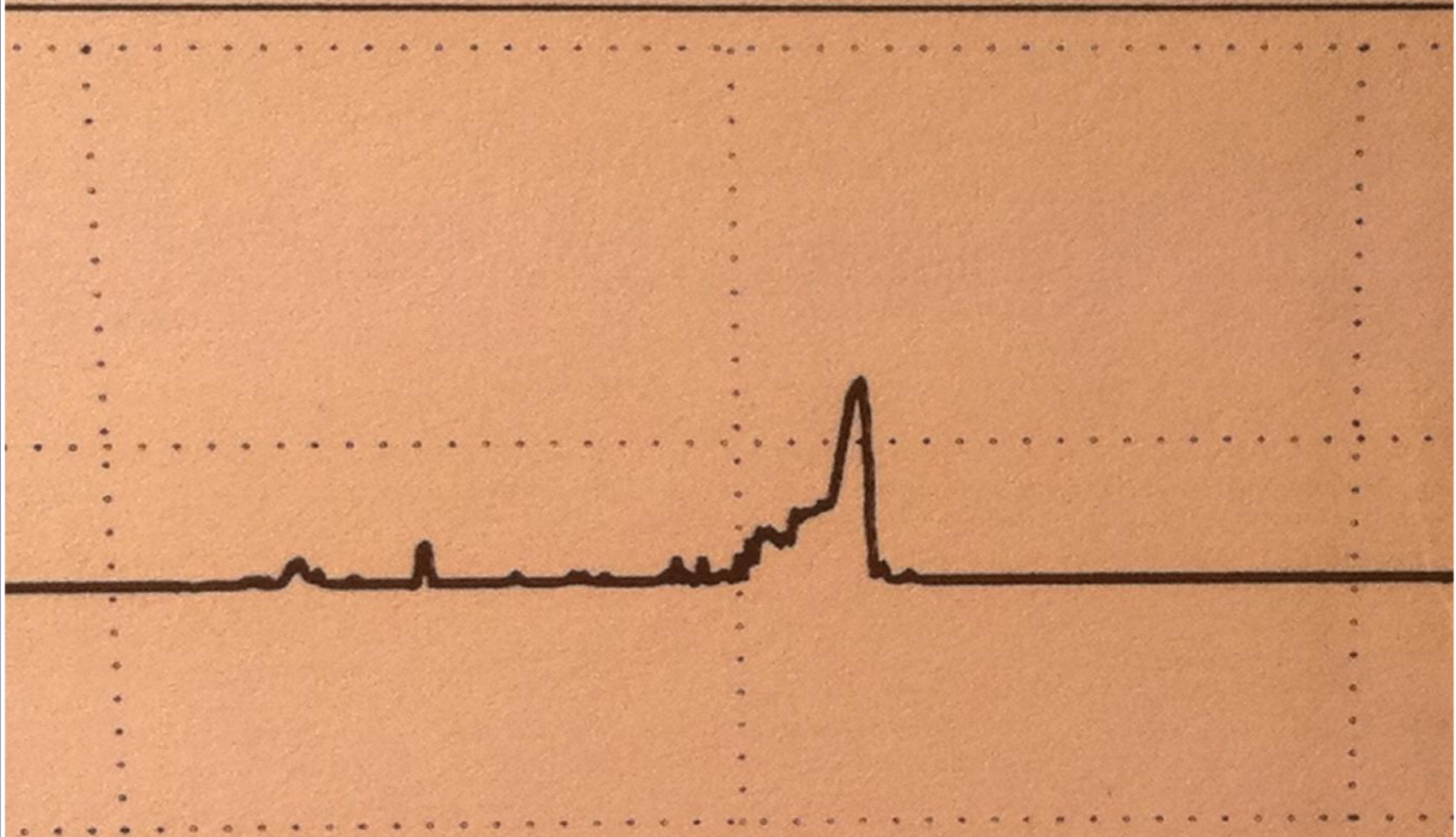


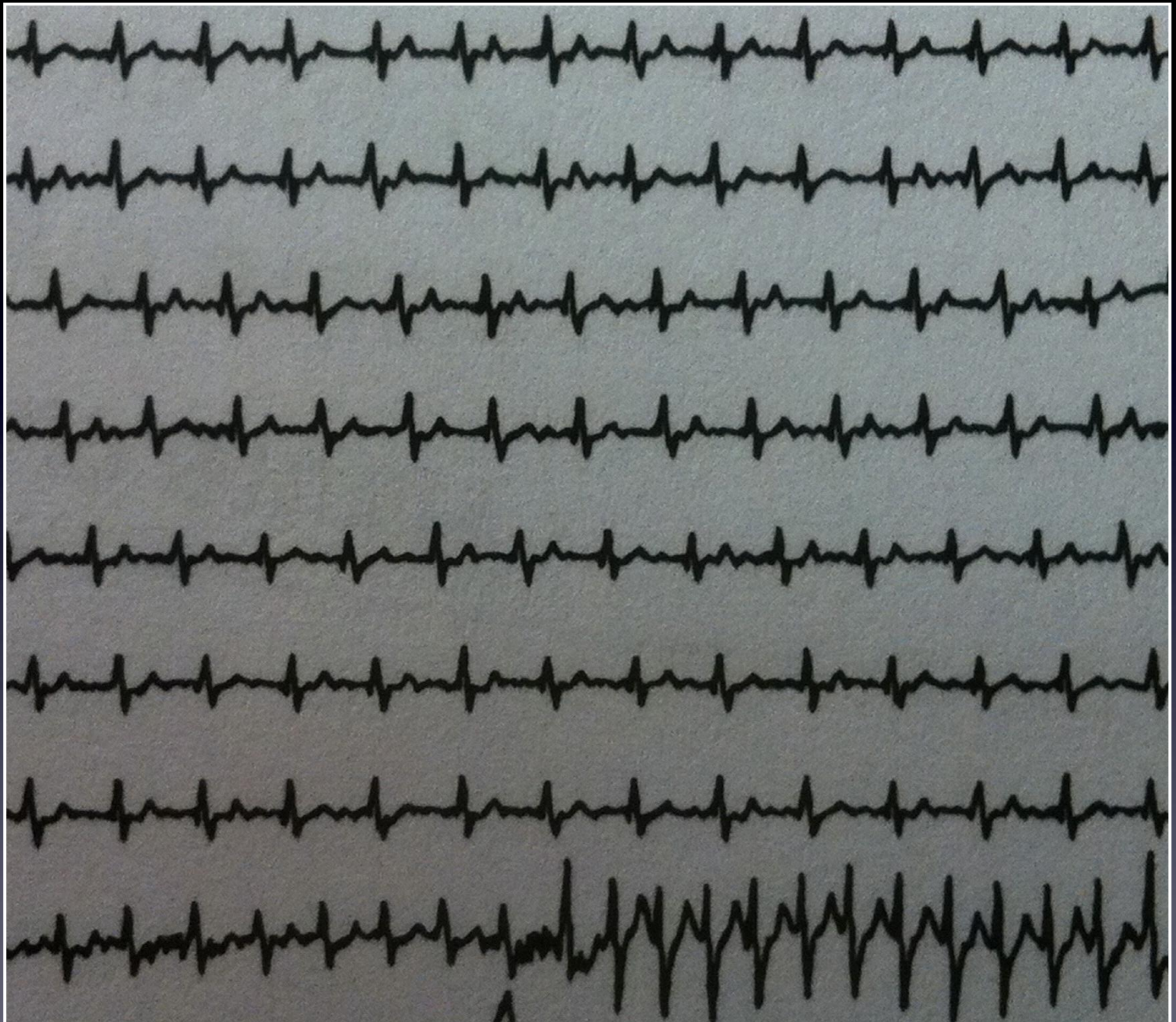
PM





TIC





Fce

200

0

60  
min

ES  
V

0

100  
M.

P  
M

0

VVI  
R

VV  
I

