



@AtulPathak31

Denervation Renale : consensus

Professor Atul PATHAK MD, PhD.

Cardiovascular Medicine. *Hopital Princesse Grace*
MONACO

Hypertension and Heart failure: Molecular and Clinical Investigations. *CNRS 5288, TOULOUSE,*
FRANCE



GRACE-PENN
MEDICINE

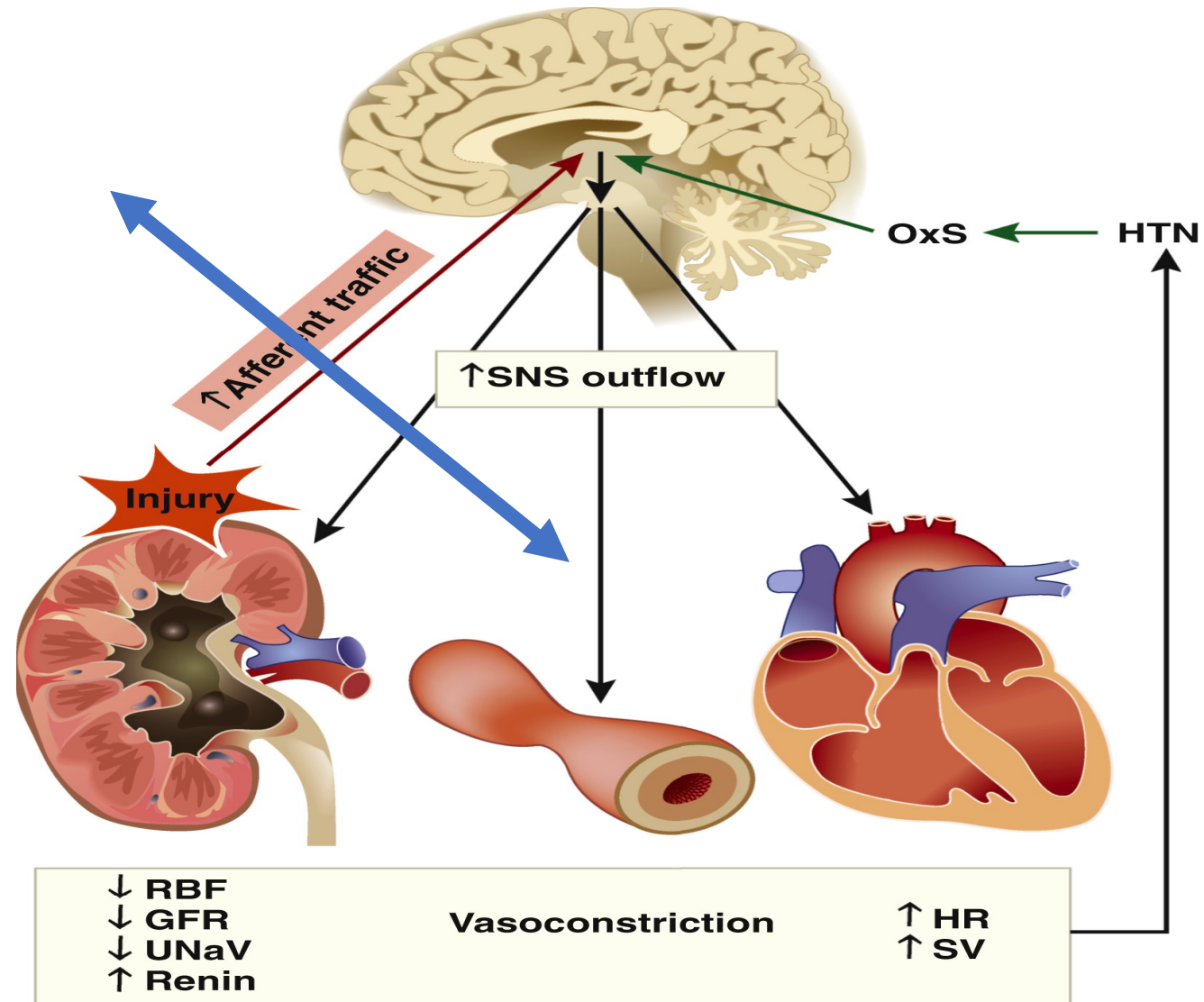


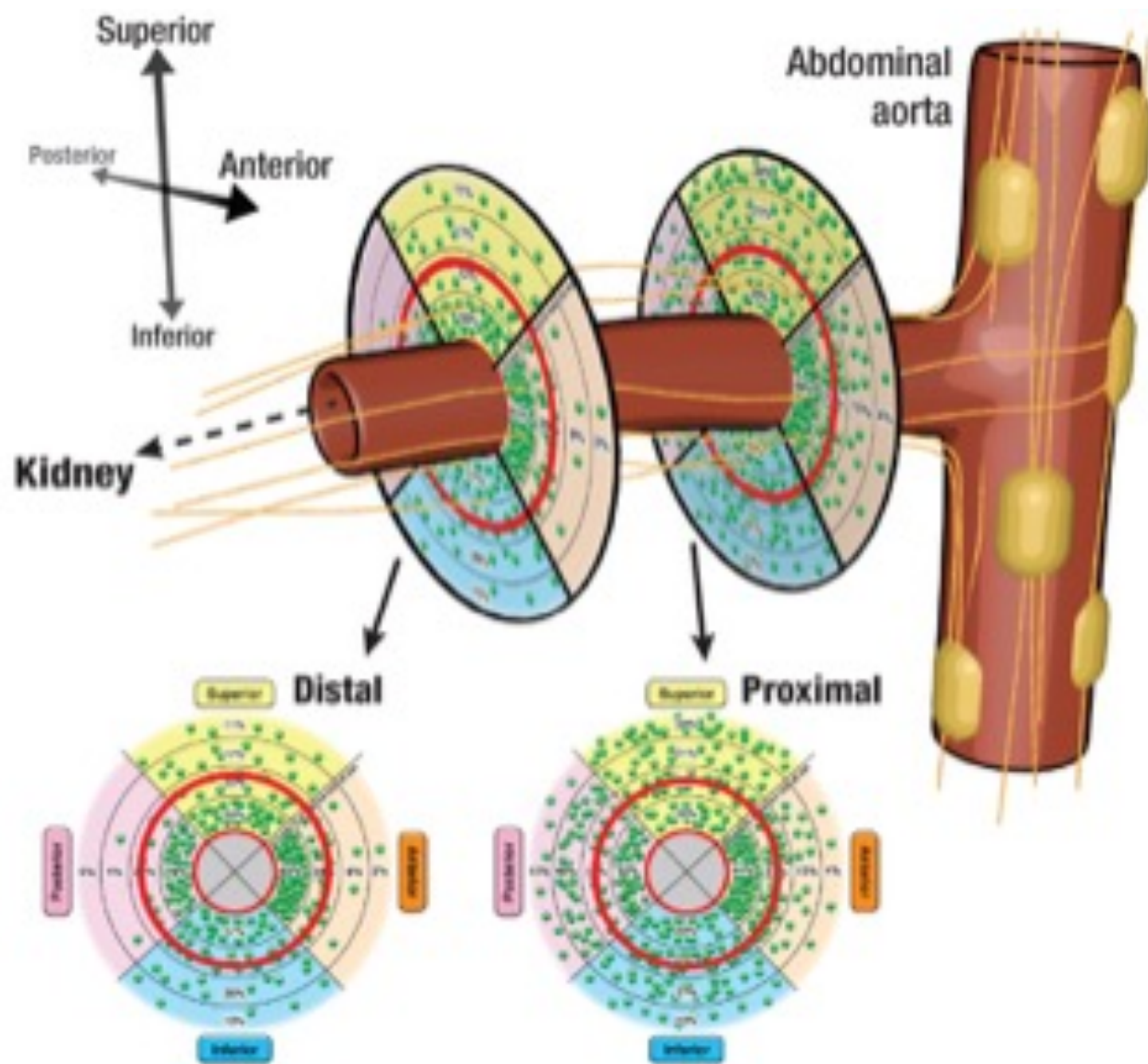
European
Hypertension
Excellence
Center
Princess
Grace Hospital
Monaco

Relations professionnelles

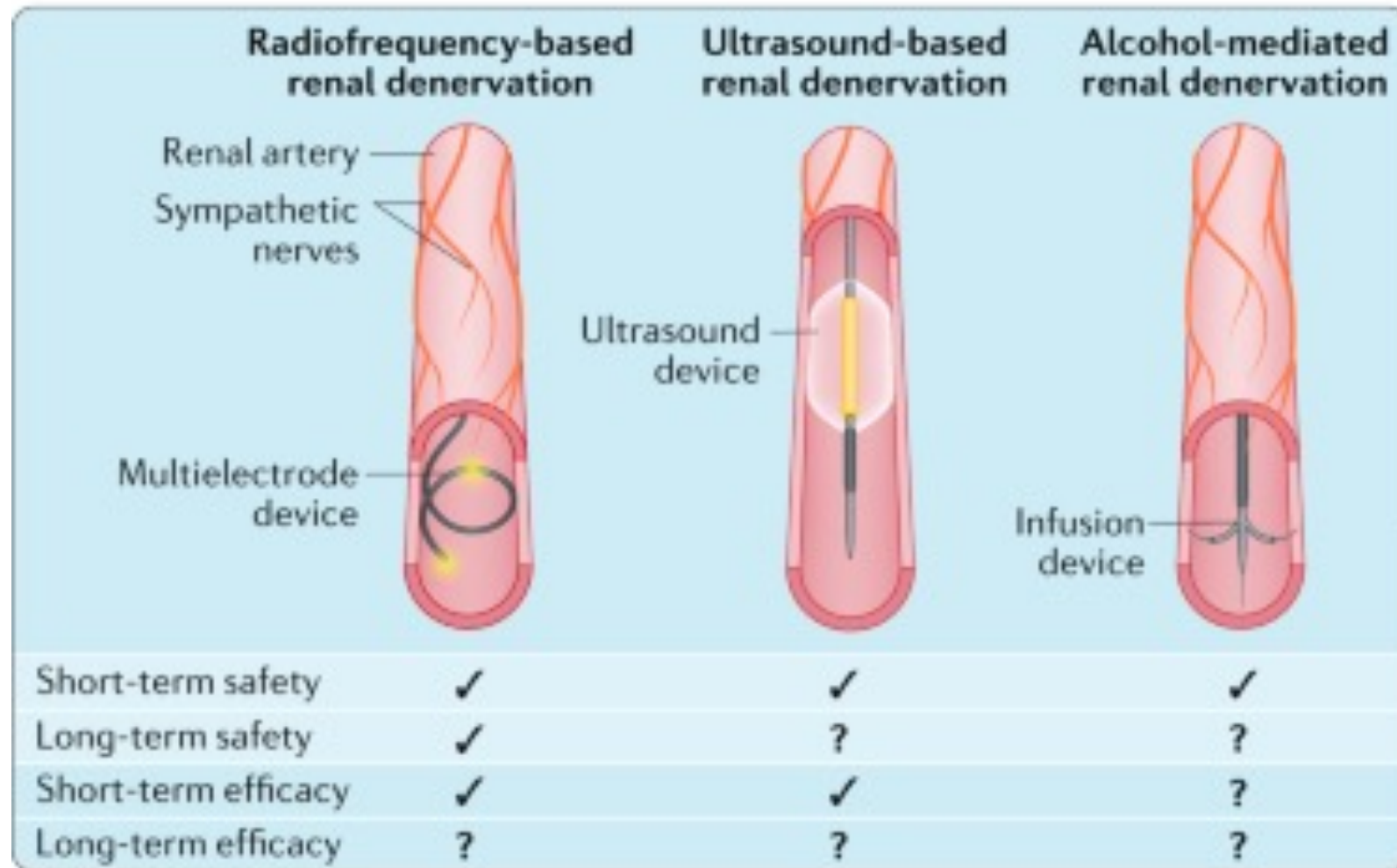
- Président de la Société Française d'HTA
- Orateur Medtronic, Recor, Ablative

What is Renal Denervation ?





How to perform Renal Denervation ?



Why perform Renal Denervation ?



What will we learn ?
In a few hours.....

ReCor Medical to Present RADIANCE II US Pivotal Trial Data in Late-Breaking Presentation at TCT Conference

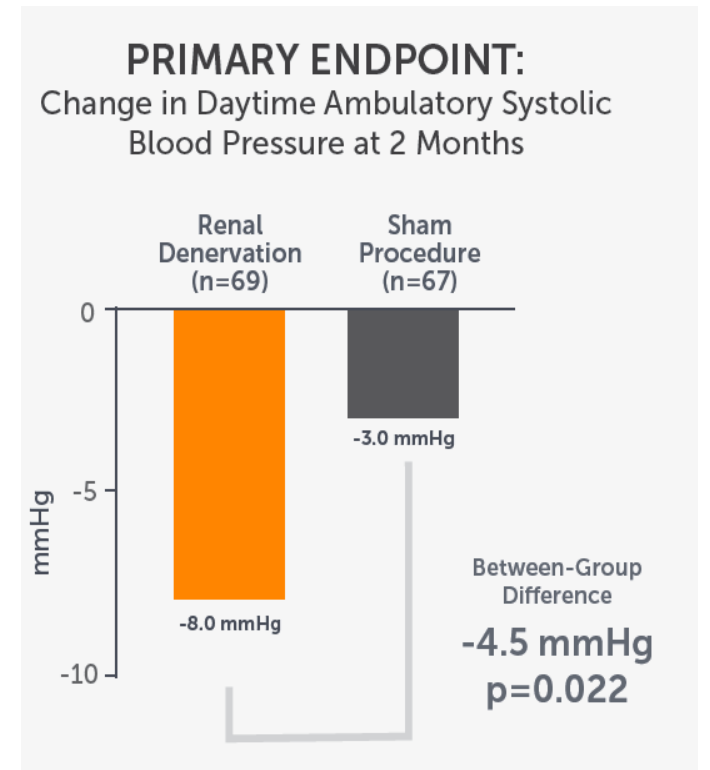
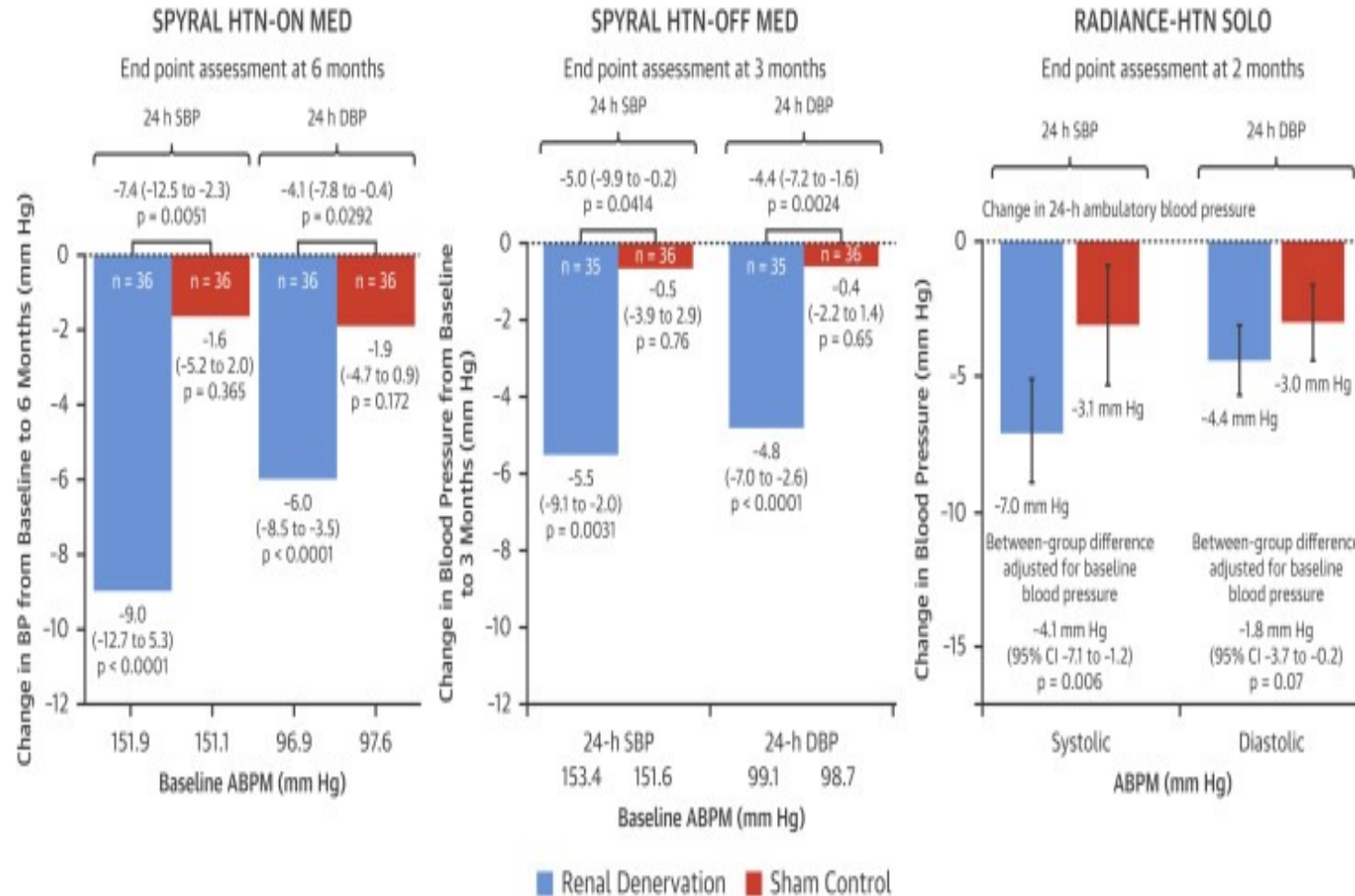


Wed, September 14, 2022, 10:02 PM · 3 min read



ReCor Medical
Ultrasound Denervation Therapies

Efficacy



ESC Consensus : Efficacy

The highest-quality trials are multicentre, randomised, sham-controlled and blinded (patients and outcome assessors) trials using ambulatory BP as the primary efficacy outcome.

Several high-quality, randomised, sham-controlled trials have been published, demonstrating a BP-lowering efficacy over 24 hours for both RF and ultrasound RDN in a broad range of patients from mild-to-moderate hypertension to severe and resistant hypertension.

ESC Consensus : Safety

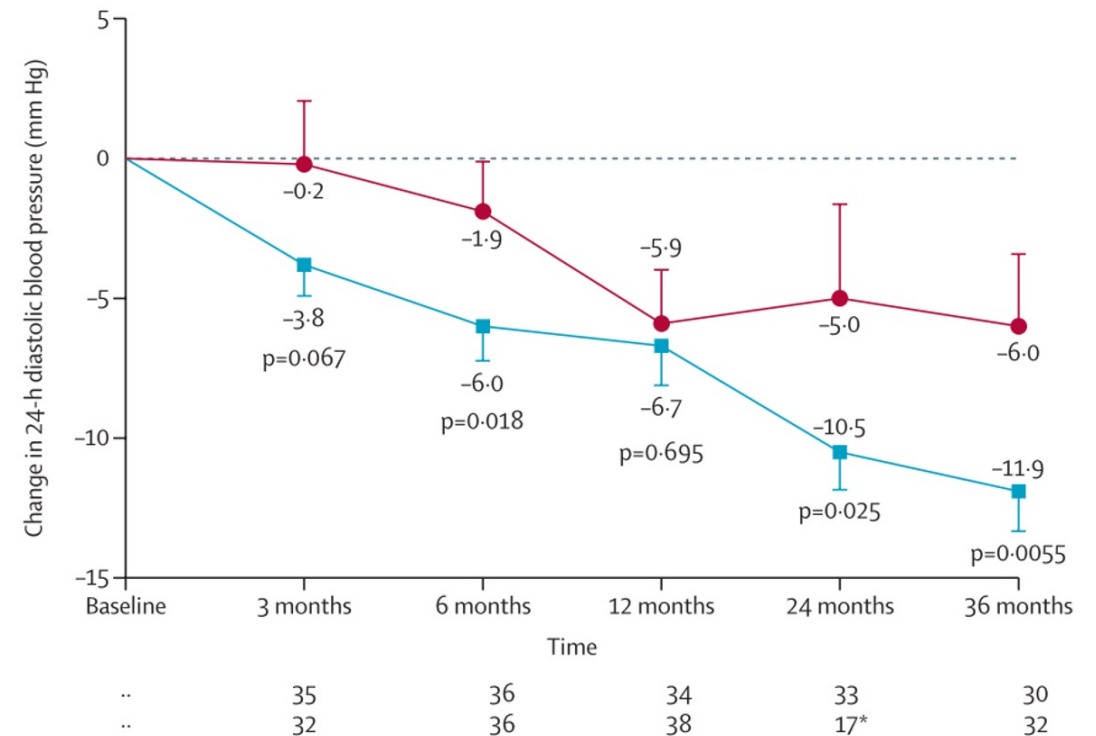
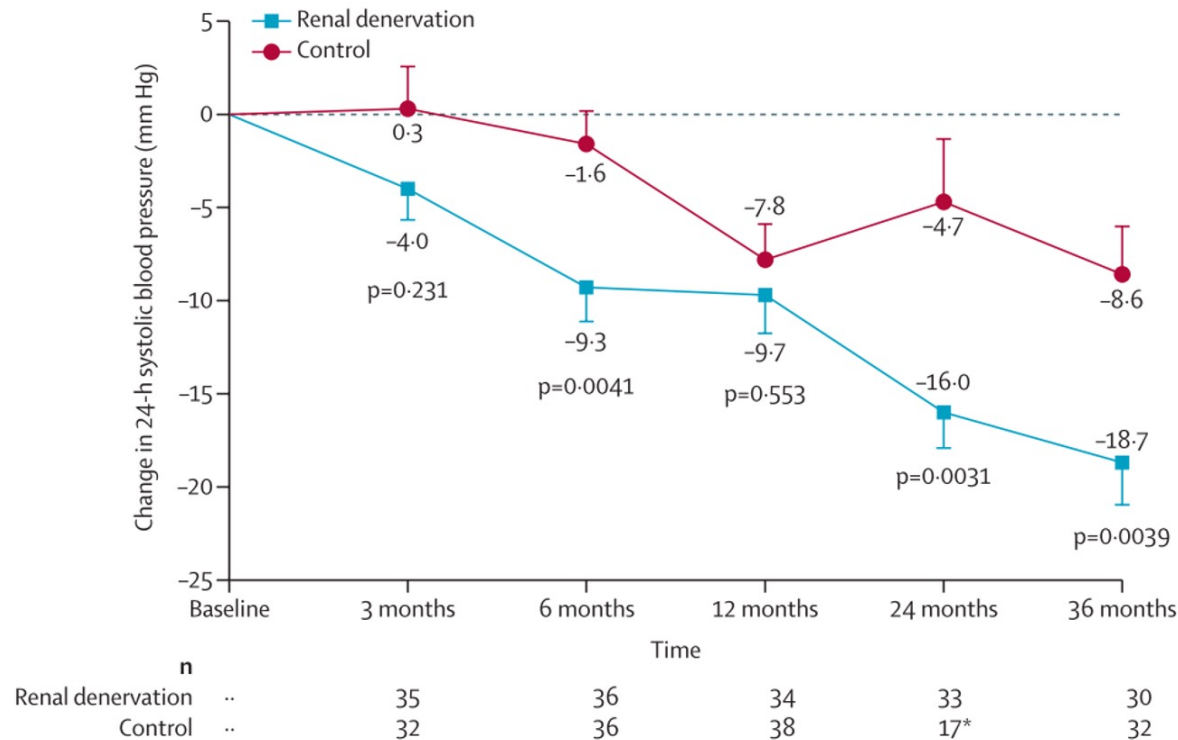
- *There were no significant procedure-related safety concerns beyond the risks associated with a transfemoral access site.*
- *Long-term follow-up data up to three years did not reveal any significant increase in de novo renal artery stenosis or worsening kidney function beyond the expected rates in hypertensive patients with normal or mild-to-moderately reduced kidney function.*

ESC Consensus : Patient ?

- *RDN may be used in adult patients with uncontrolled resistant hypertension (office BP $\geq 140/\geq 90$ mmHg confirmed by 24-hour ambulatory systolic BP ≥ 130 mmHg or daytime systolic BP ≥ 135 mmHg) treated with ≥ 3 antihypertensive drugs and eGFR ≥ 40 ml/min/1.73 m².*
- *RDN may be a possible treatment option in patients unable to tolerate antihypertensive drugs in the long term and express a preference to undergo RDN in a tailored shared decision-making process.*
- *The patient's global CV risk should be evaluated, taking HMOD and CV complications into account, and may militate the decision-making process in favour of RDN.*

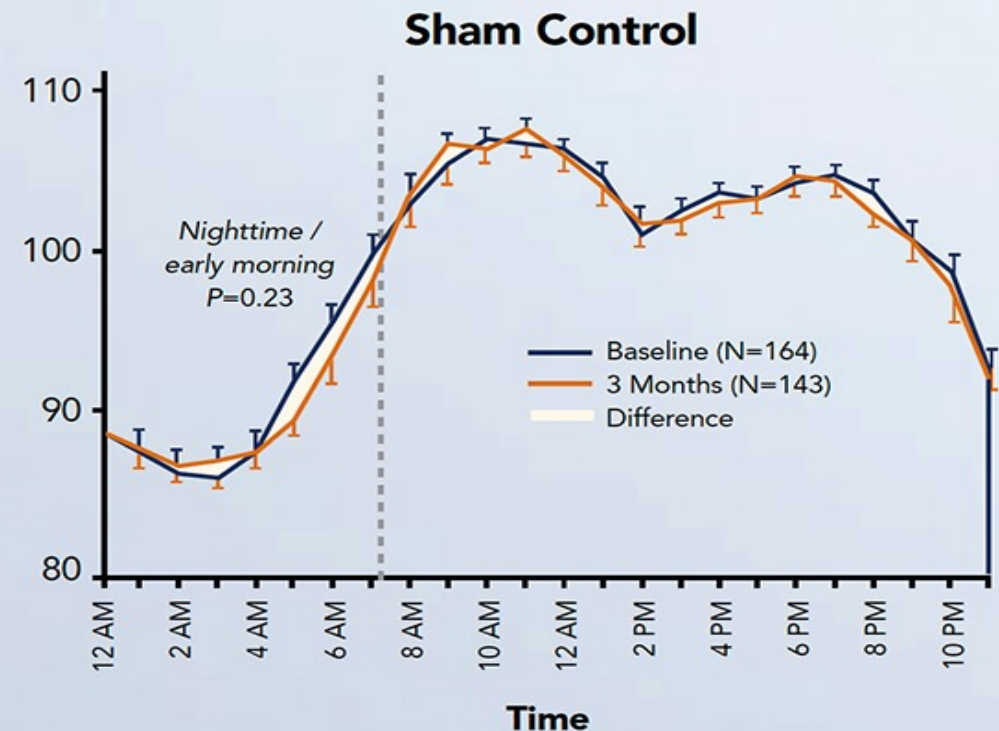
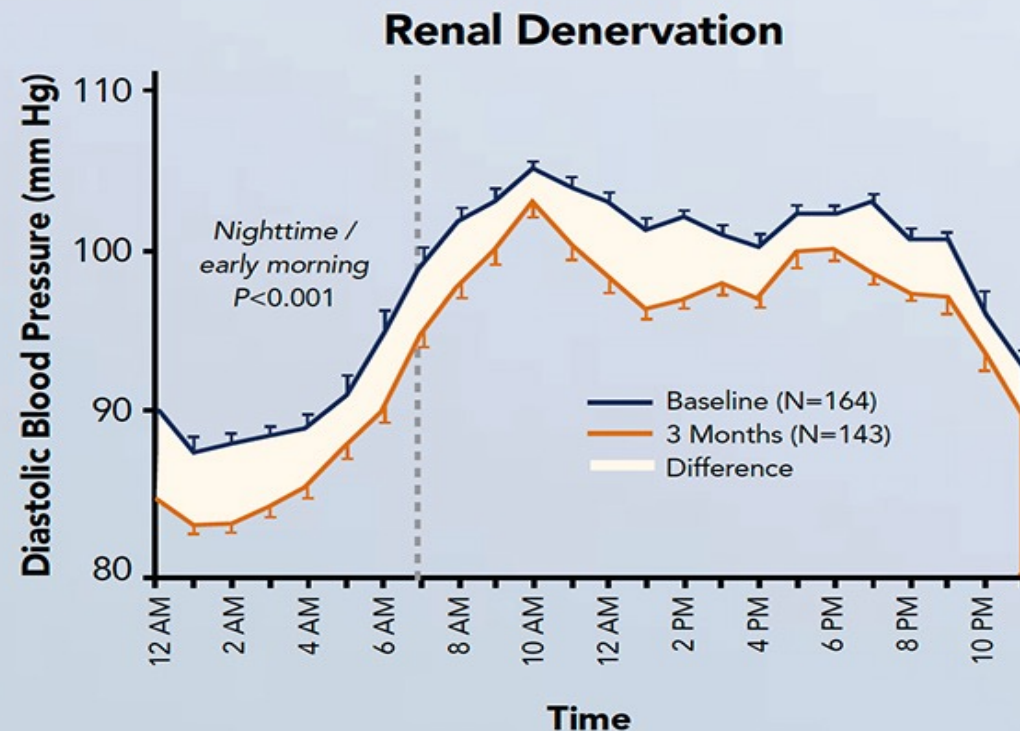
ESC Consensus : Durability

- Data from registries and sham-controlled trials indicate a sustained BP-lowering effect of RDN at least for up to three years.*

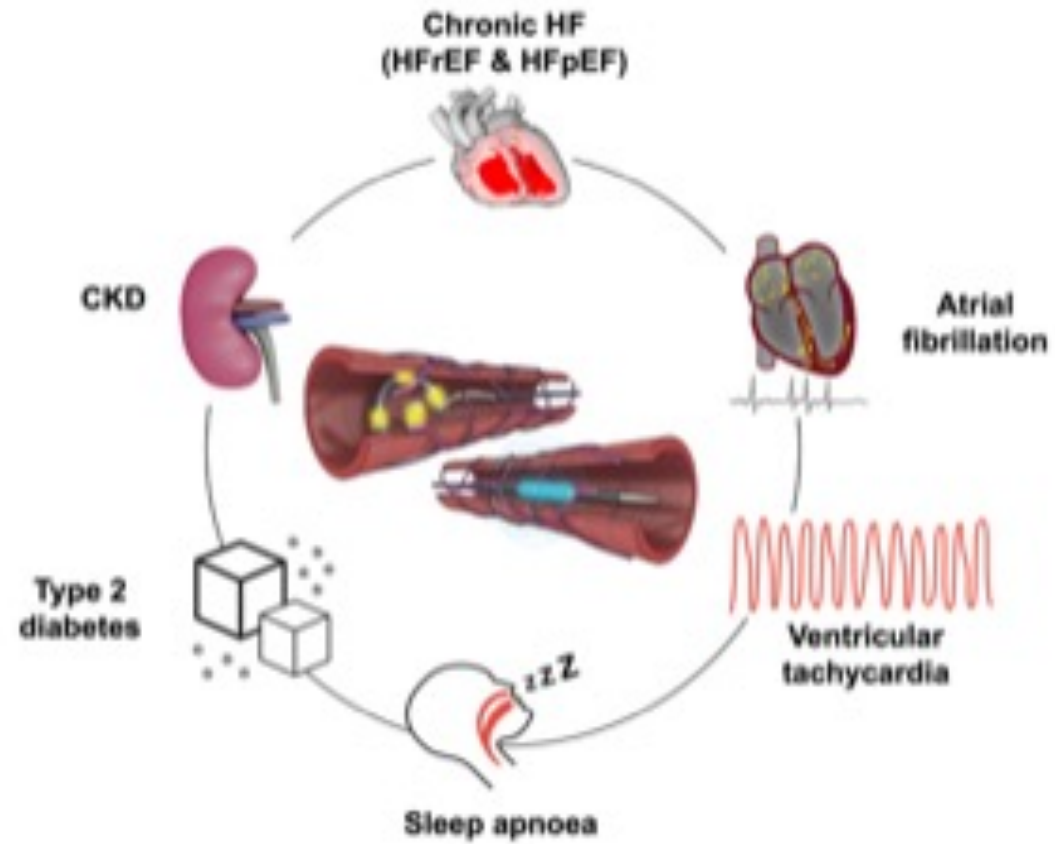


ESC Consensus : Durability

24-hour ambulatory systolic blood pressure at baseline and three months for renal denervation and sham control groups in the SPYRAL OFF-MED Pivotal Trial. Error bars indicate one standard error.



Perspectives



Conclusion

- RDN is a solution to optimize BP management in patient with and without drugs
- Now available in our excellence center (Centre Hospitalier Princesse Grace) and Centers around Europe
- Efficacy and Safety